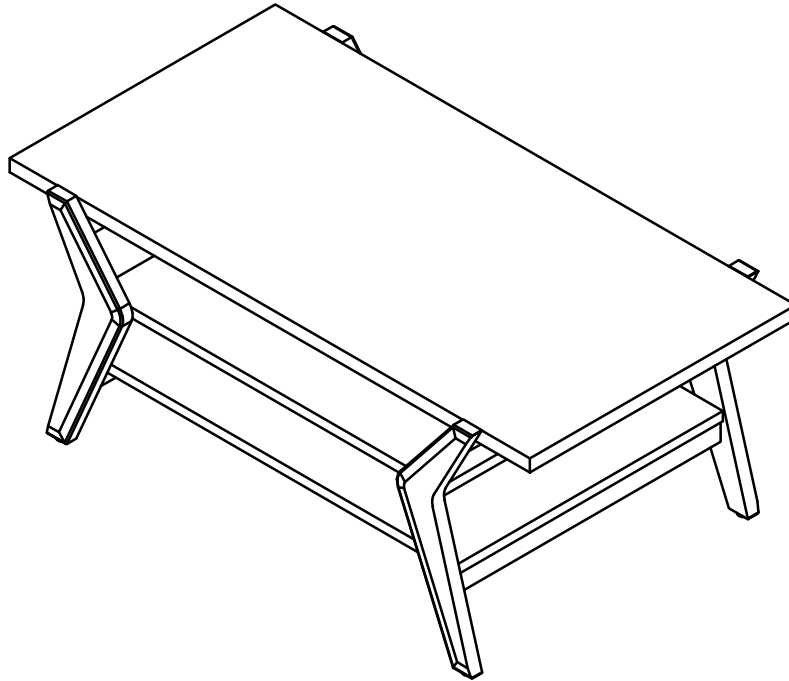


COFFEE TABLE

Stock number: 3049-05

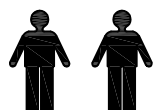
Thank you for purchasing this product. Please read the instructions carefully before use to ensure safe and satisfactory operation of this product.



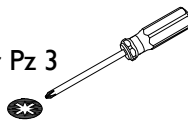
Pre-assembly preparation

Please ensure instructions are read in full before attempting to assemble this product.

Necessary Tools : Pozi screwdriver



Pz 2 or Pz 3



(Included)



Please check the pack contents before attempting to assemble this product. A full checklist of components is given in this leaflet. If any components are missing, please contact the retailer from whom you bought this product.

This product takes approximately **30 MINUTES** to assemble with **2 PEOPLE**.

All assembly should be performed on a flat, stable, clean and soft surface.

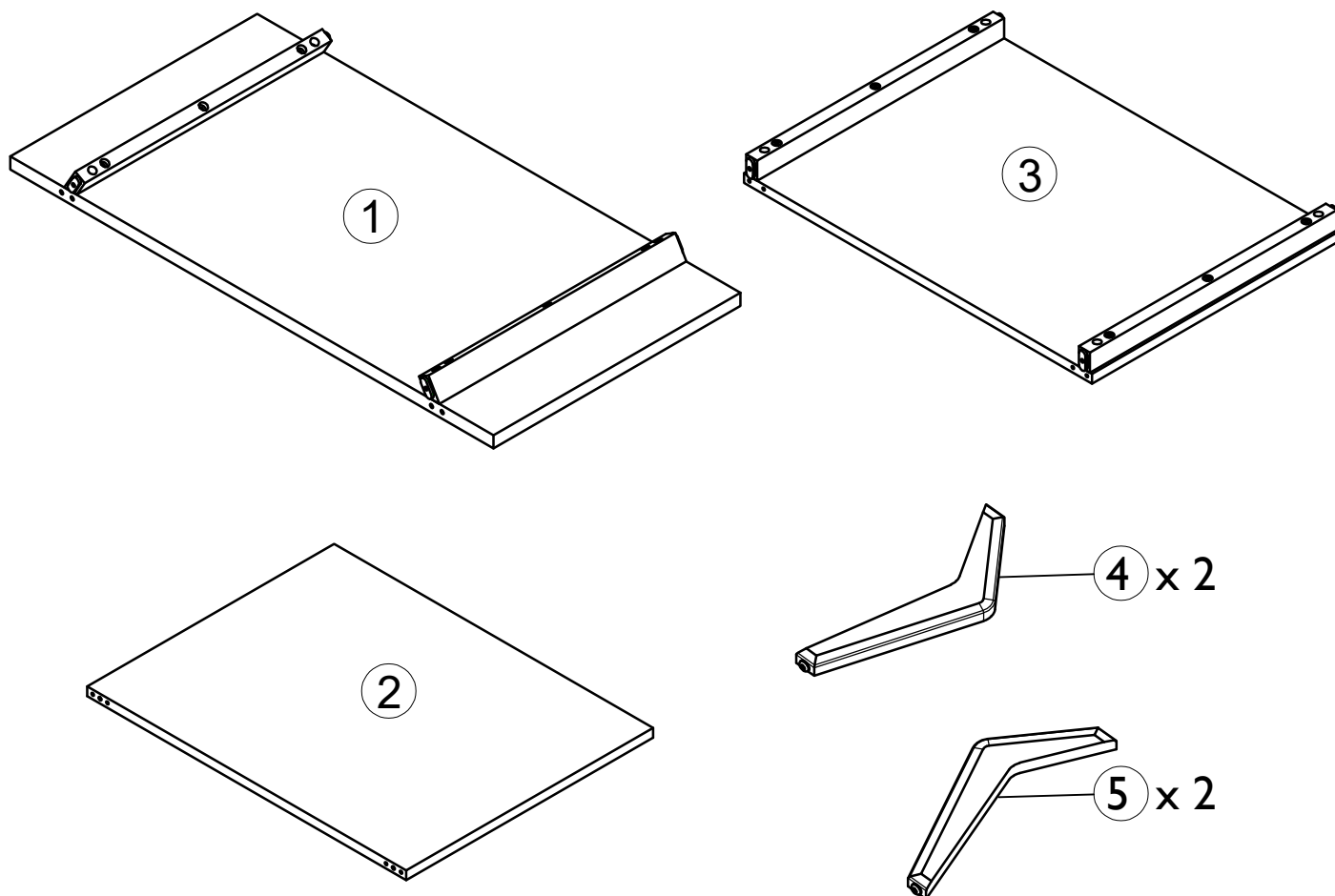
This product is **HEAVY**, it should be assembled as near as possible to the point of use. **TAKE CARE WHEN LIFTING** to avoid personal injury and (or) damage to the product

The fitting pack contains **SMALL ITEMS** which should be **KEPT AWAY FROM YOUNG CHILDREN**.

IMPORTANT: Retain these instructions for future reference.

Page : 1

IW-17-3049-05-0-0



Fittings and parts checklist

Item	Description	Qty.	Item	Description	Qty.
1	Top frame	x 1	4	Leg A	x 2
2	Fixed shelf A	x 1	5	Leg B	x 2
3	Fixed shelf frame B	x 1			
A	Wooden dowel Ø8x30mm	x 8	D	Housing Ø15x13.5mm	x 12
B	Wooden dowel Ø6x30mm	x 16	E	Grub screw M8x8mm	x 12
C	Steel dowel Ø7x52mm	x 12	F	Allen key M4x30x110mm	x 1

Step By Step Assembly Instructions

Step

1

1.1: Lay all parts on a flat, stable, clean and soft surface.

1.2: Insert 8x dowel (A) into the pre-drilled holes on top frame (1) as shown

1.3: Insert 16x dowels (B) into the pre-drilled holes on fixed shelf A (2), fixed shelf frame B (3) as shown.

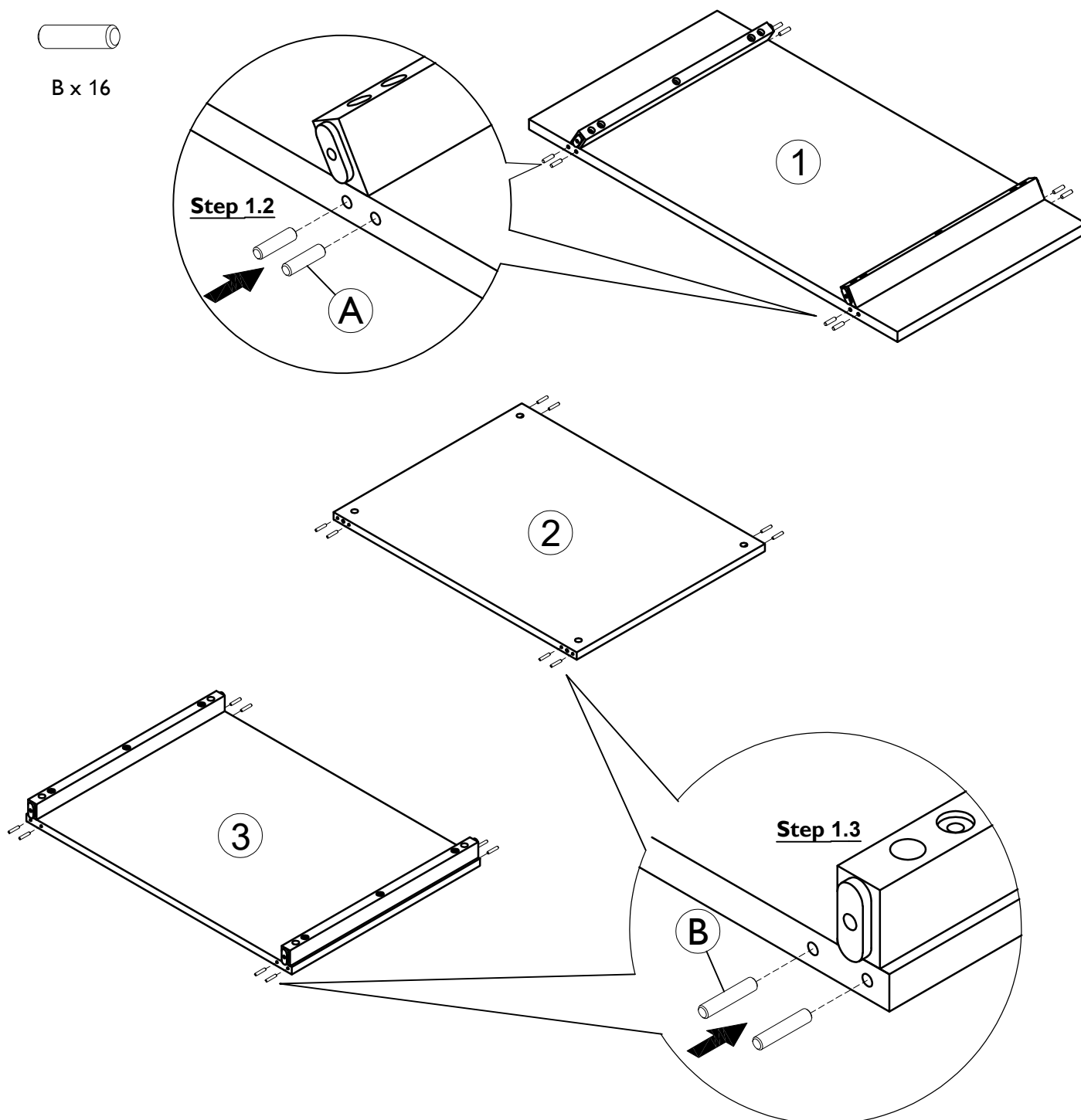
Fitting



A x 8



B x 16



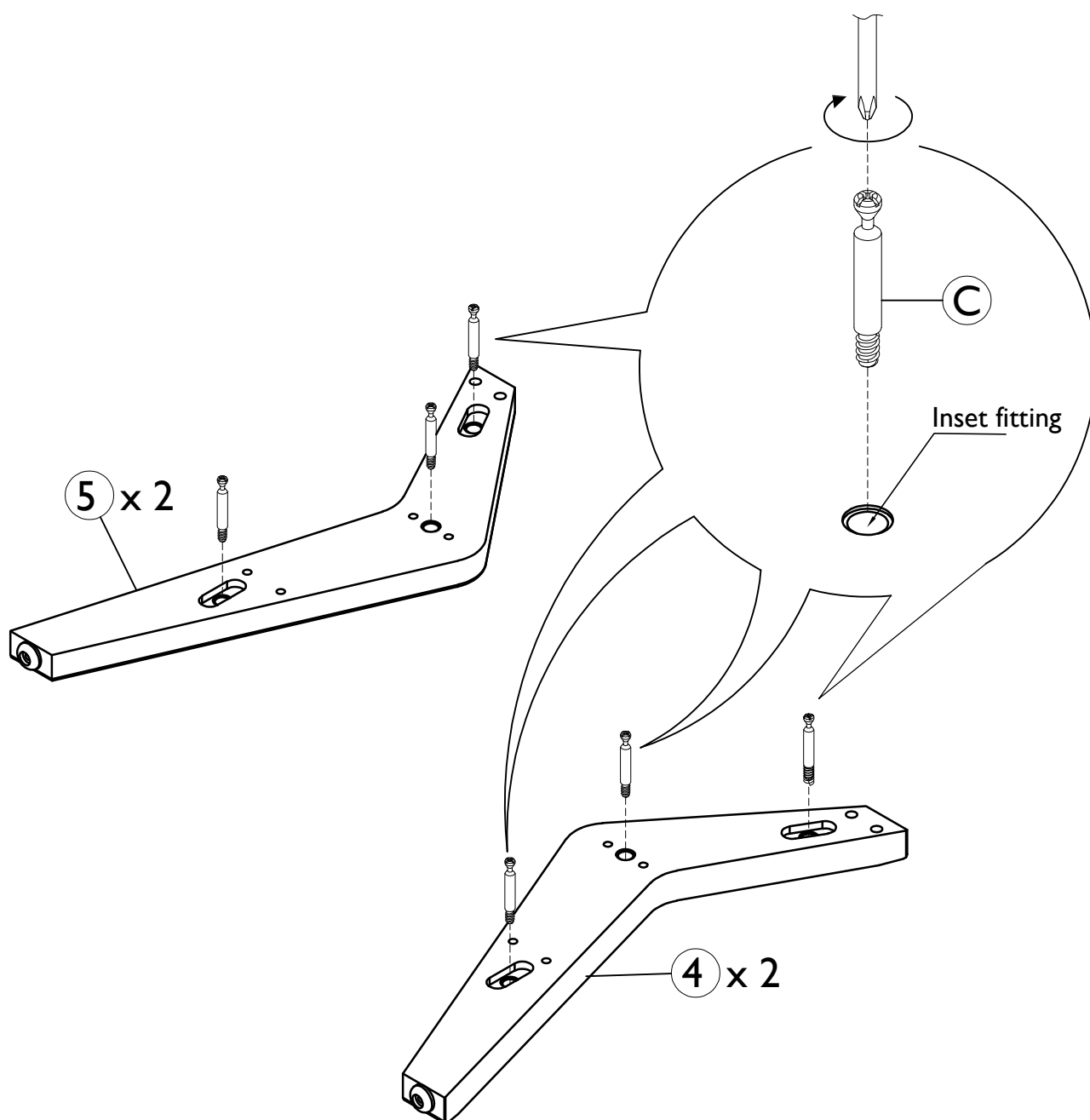
Step By Step Assembly Instructions

Step 2 Attach 12x steel dowels (C) into leg A (4) & leg B (5) by screwing fittings (C) into the inset fittings that are located on parts (4) & (5) as shown. Use a pozi screwdriver to turn fittings (C) clockwise to fix.

Fitting



C x 12



Step By Step Assembly Instructions

Step 3

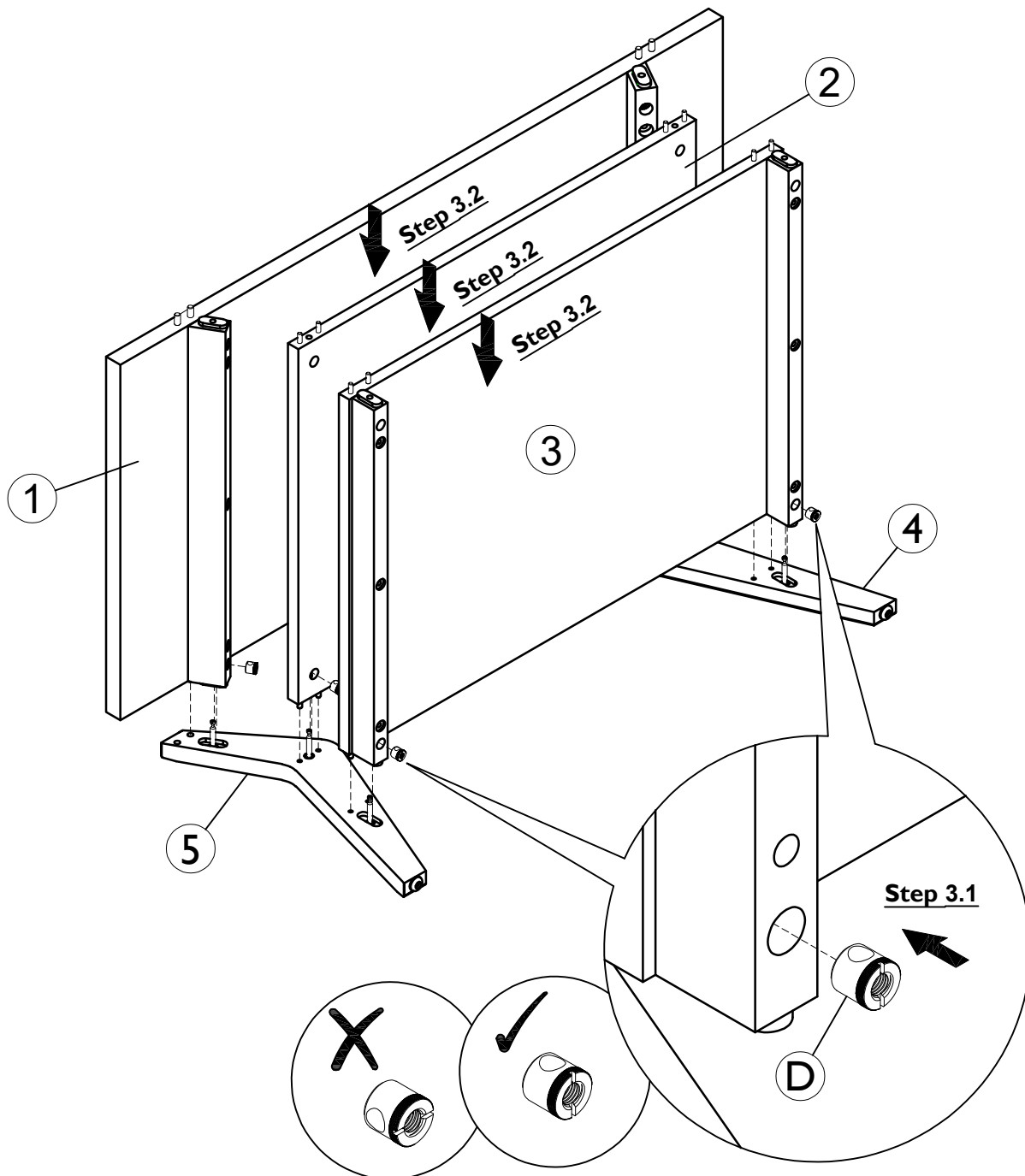
3.1 : Attach 6x housings (D) into the pre-drilled holes on top frame (1), fixed shelf A (2) and fixed shelf frame B (3) as shown.

3.2 : Attach top frame (1), fixed shelf A (2) and fixed shelf frame B (3) onto leg A (4) & leg B (5) as shown. Ensure wooden dowels (A), (B) and steel dowel (C) are aligned correctly with the holes of mating parts before attaching.

Fitting



D x 6



Step By Step Assembly Instructions

Step 4 Secure parts (1), (2), (3), to parts (4) & (5) using 6x grub screws (E) as shown. Use an allen key (F) to turn fittings (E) clockwise to fix.

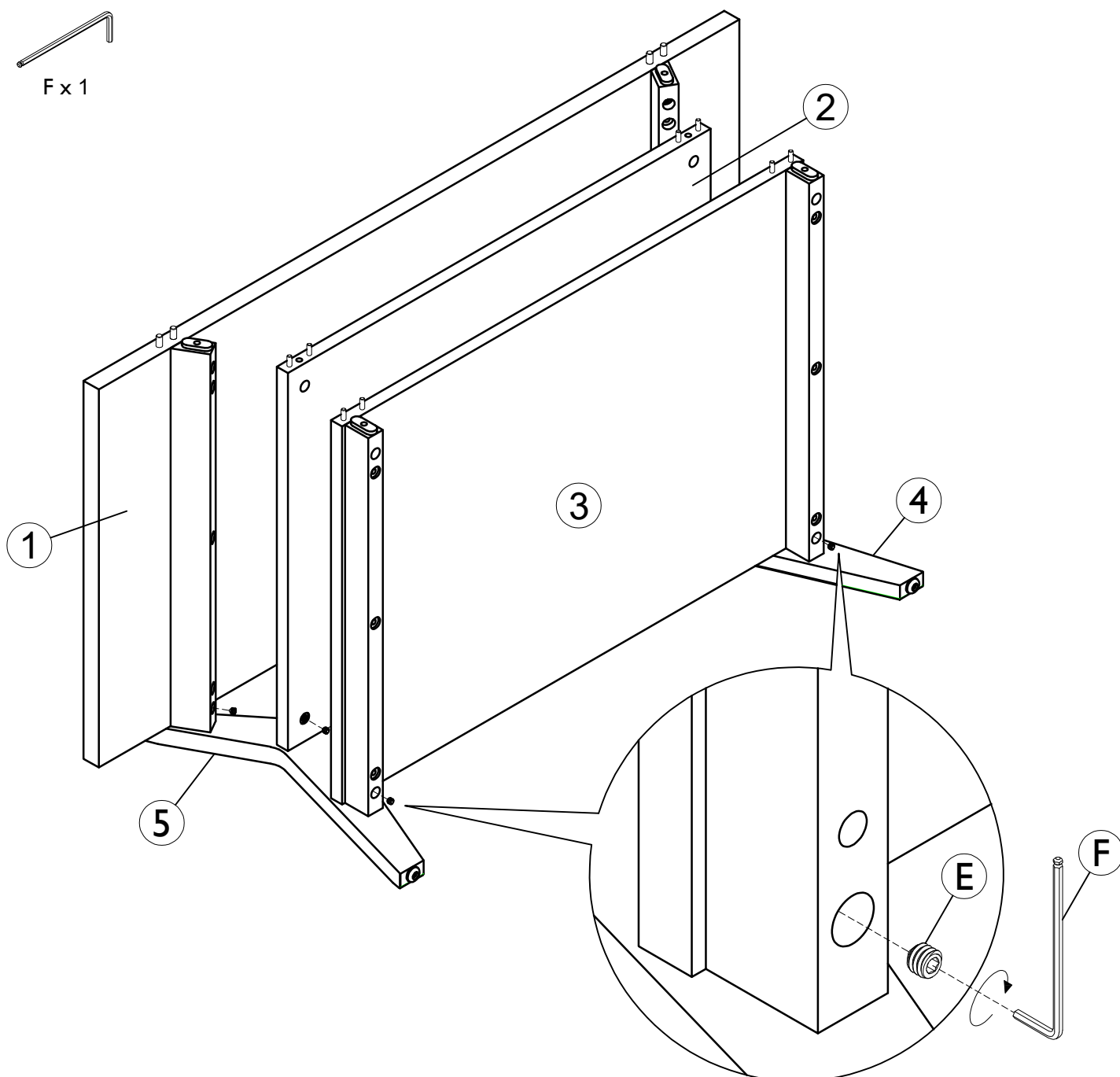
Fitting



E x 6



F x 1



Step By Step Assembly Instructions

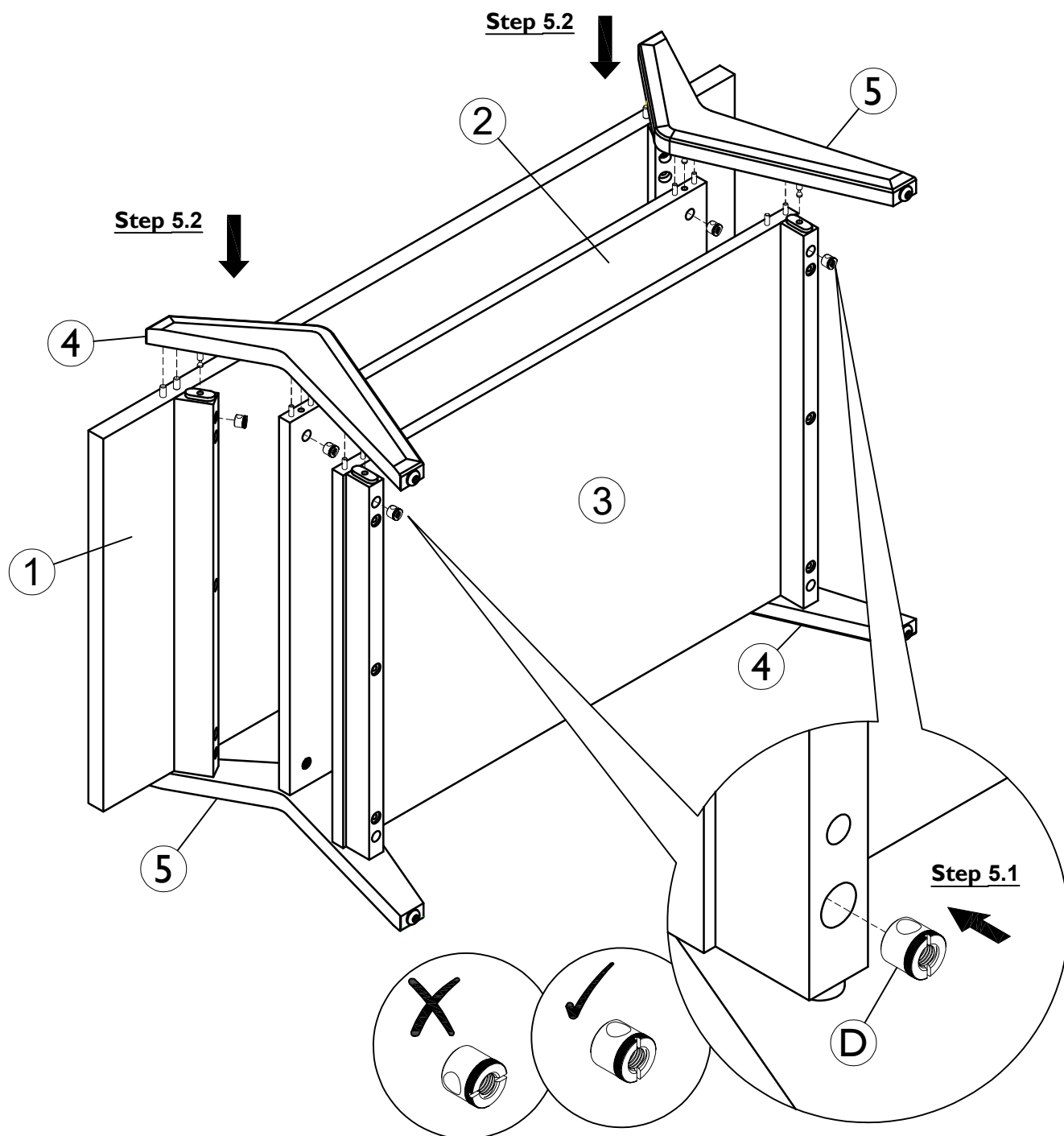
Step 5

- 5.1 : Attach 6x housings (D) into the pre-drilled holes on shelf frame (1), (2), (3) as shown.
- 5.2 : Attach leg A (4) & leg B (5) to the structure assembled in **step 4** as shown. Ensure steel dowel (C) and wooden dowels (A), (B) are aligned correctly with the holes of mating parts before attaching.

Fitting



D x 6



Step By Step Assembly Instructions

- Step 6**
- 6.1 : Secure (4) & (5) to parts (1), (2), (3), using 6x grub screws (E) as shown. Use a allen key (F) to turn fittings (E) clockwise to fix.
- 6.2 : With help of assistant, carefully turn the unit up right.

