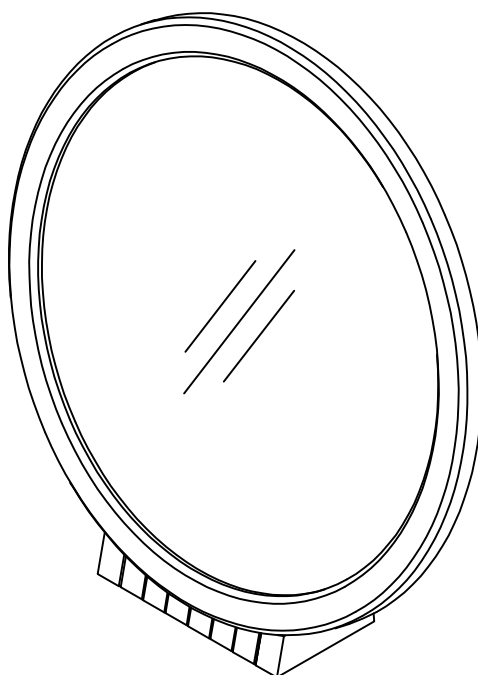


# VANITY MIRROR

Stock number: 3052-17

Thank you for purchasing this product. Please read the instructions carefully before use to ensure safe and satisfactory operation of this product.



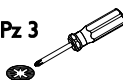
## Pre-assembly preparation

Please ensure instructions are read in full before attempting to assemble this product.

**Necessary Tools :** Pozi screwdriver



Pz 2 or Pz 3



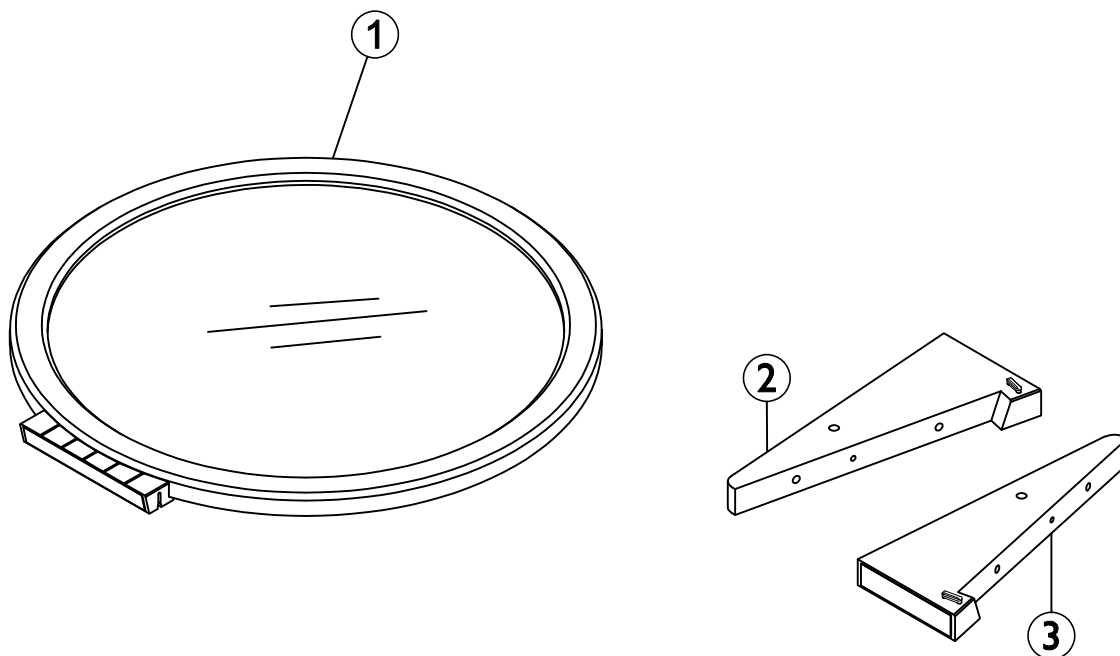
Please check the pack contents before attempting to assemble this product. A full checklist of components is given in this leaflet. If any components are missing, please contact the retailer from whom you bought this product.

This product takes approximately **15 MINUTES** to assemble with **1 PERSON**.

All assembly should be performed on a flat, stable, clean and soft surface.

The fitting pack contains **SMALL ITEMS** which should be **KEPT AWAY FROM YOUNG CHILDREN**.

**IMPORTANT:** Retain these instructions for future reference.

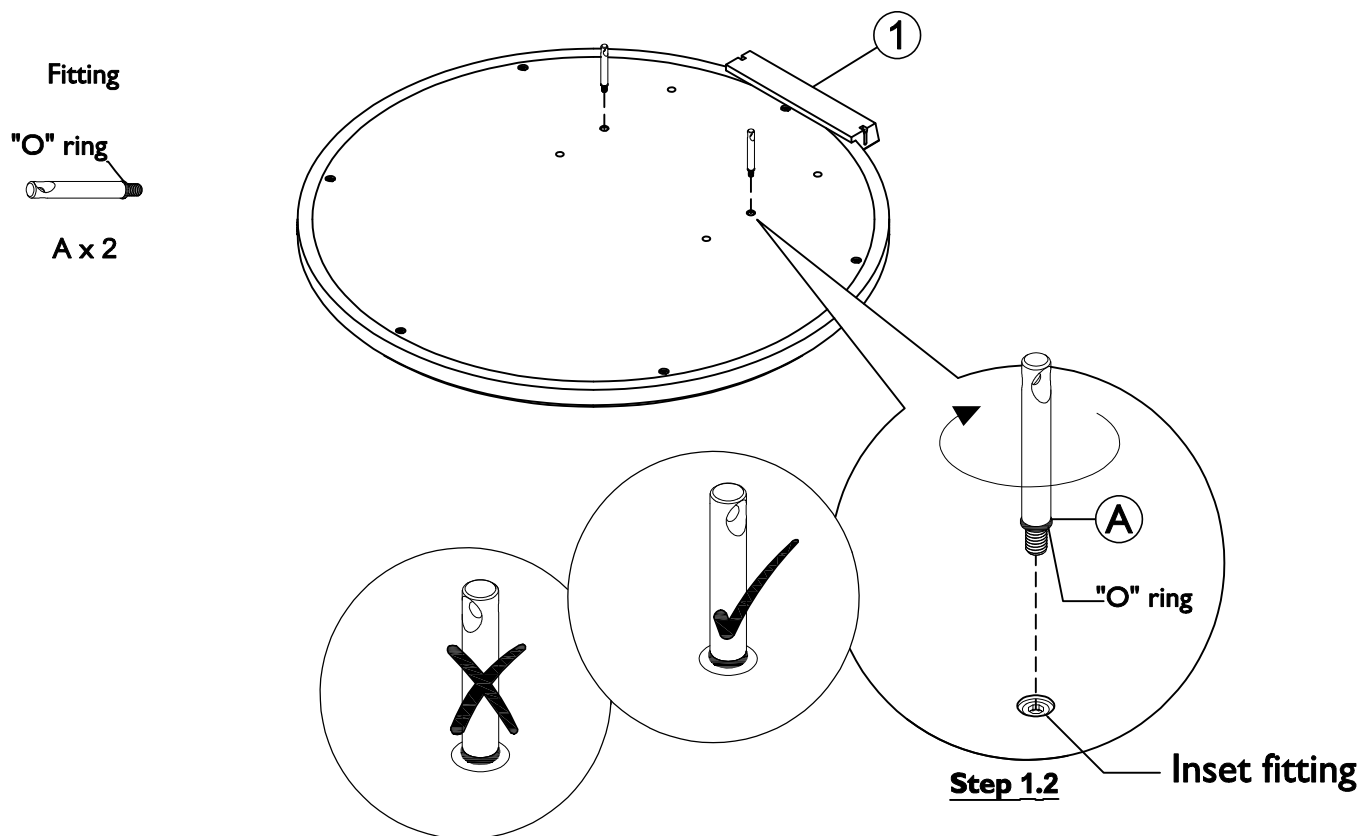


## Fittings and parts checklist

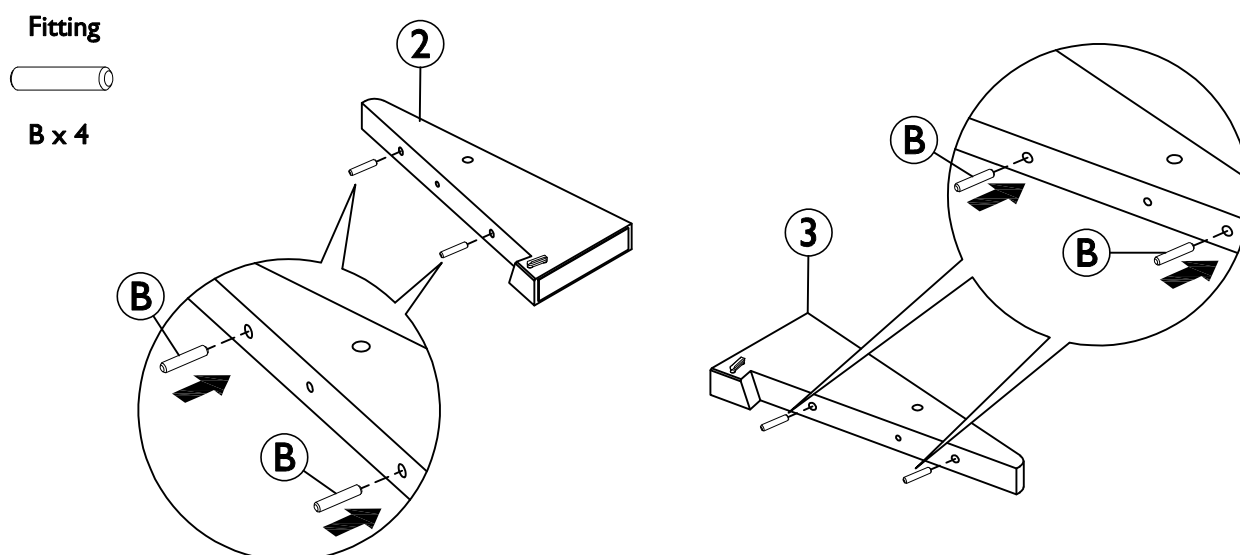
Item	Description	Qty.	Item	Description	Qty.
1	Mirror frame	x 1	3	Post right	x 1
2	Post left	x 1			
A	Steel dowel Ø5.5 x 45mm	x 2	C	Grub screw Ø7 x 7.5mm	x 2
B	Wooden dowel Ø8x30mm	x 4			

# Step By Step Assembly Instructions

- Step 1**
- 1.1 : Lay all parts onto a flat, stable, clean and soft surface.
  - 1.2 : Attach 2x steel dowels (A) into mirror frame (1) by screwing fittings (A) into the inset fitting that are located on part (1) as shown. Ensure the direction of the holes on fittings (A) are facing correctly as per diagram.



- Step 2** Insert 4x wooden dowels (B) into the pre-drilled holes on parts (2) & (3) as shown.



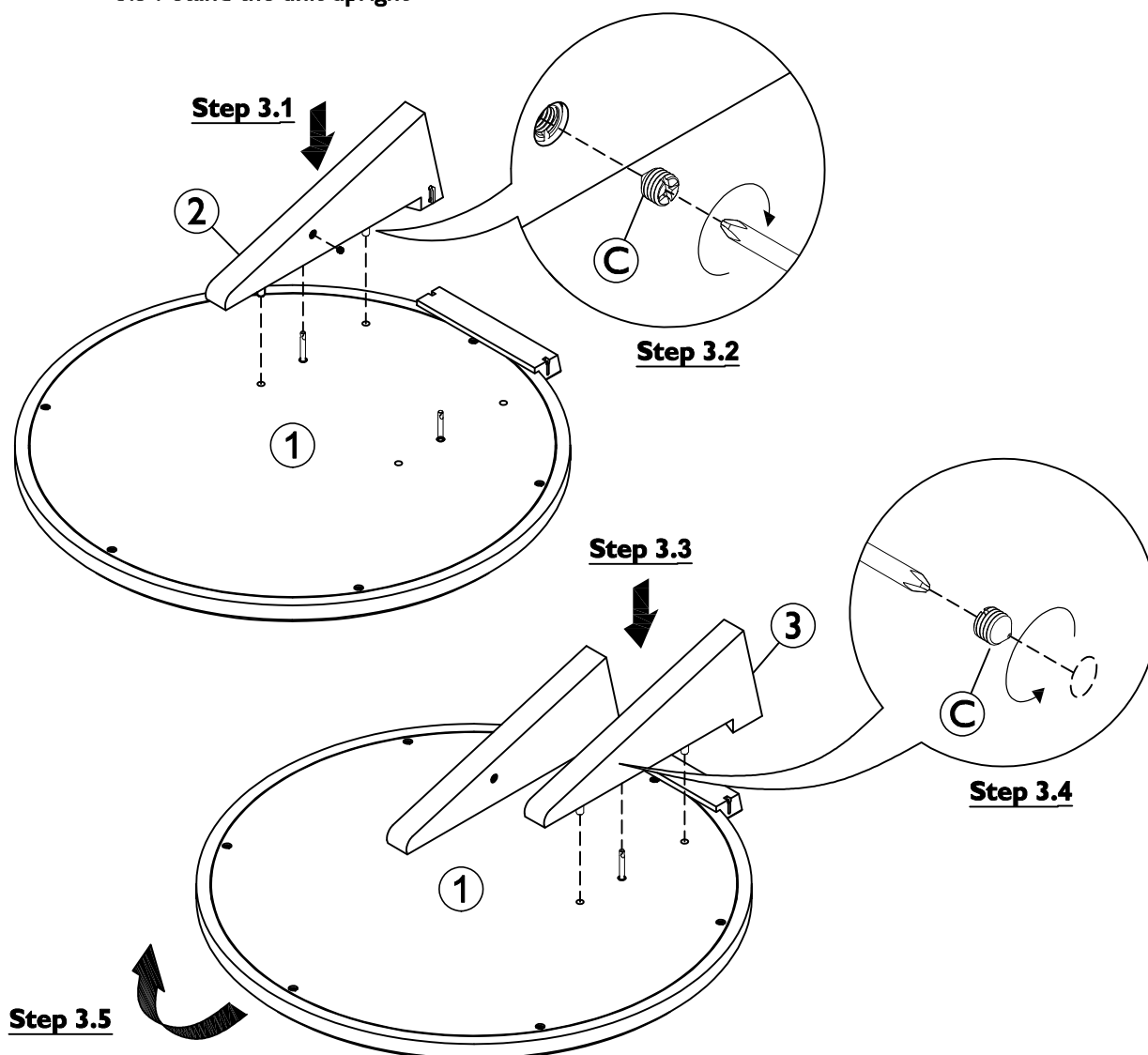
# Step By Step Assembly Instructions

- Step 3**
- 3.1 : Attach post left (2) onto mirror frame (1) as shown. Ensure steel dowel (A) and wooden dowels (B) are aligned correctly with the holes of mating parts before attaching.
- 3.2 : Secure part (2) to part (1) using 1x grub screw (C) as shown. Use a pozi screwdriver to turn fitting (C) clockwise to fix.
- 3.3 : Attach post right (3) onto mirror frame (1) as shown. Ensure steel dowel (A) and wooden dowels (B) are aligned correctly with the holes of mating parts before attaching.
- 3.4 : Secure part (3) to part (1) using 1x grub screw (C) as shown. Use a pozi screwdriver to turn fitting (C) clockwise to fix.
- 3.5 : Stand the unit upright

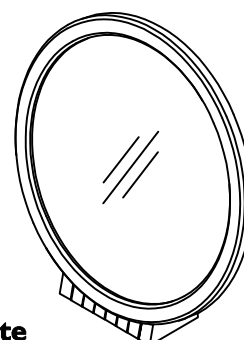
Fitting



C x 2



**Assembly is complete**



**Page : 4**