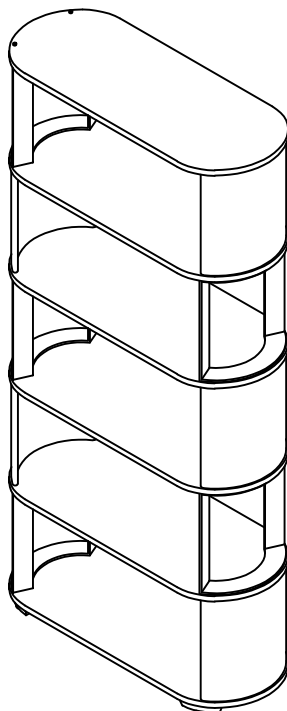


OPEN DISPLAY UNIT

Stock number: 3044-27

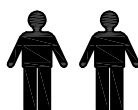
Thank you for purchasing this product. Please read the instructions carefully before use to ensure safe and satisfactory operation of this product.



Pre-assembly preparation

Please ensure instructions are read in full before attempting to assemble this product.

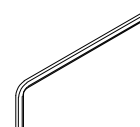
Necessary Tools : Phillips screwdriver



Ph 2



(Included)



Please check the pack contents before attempting to assemble this product. A full checklist of components is given in this leaflet. If any components are missing, please contact the retailer from whom you bought this product.

This product takes approximately **15 MINUTES** to assemble with **2 PERSON**.

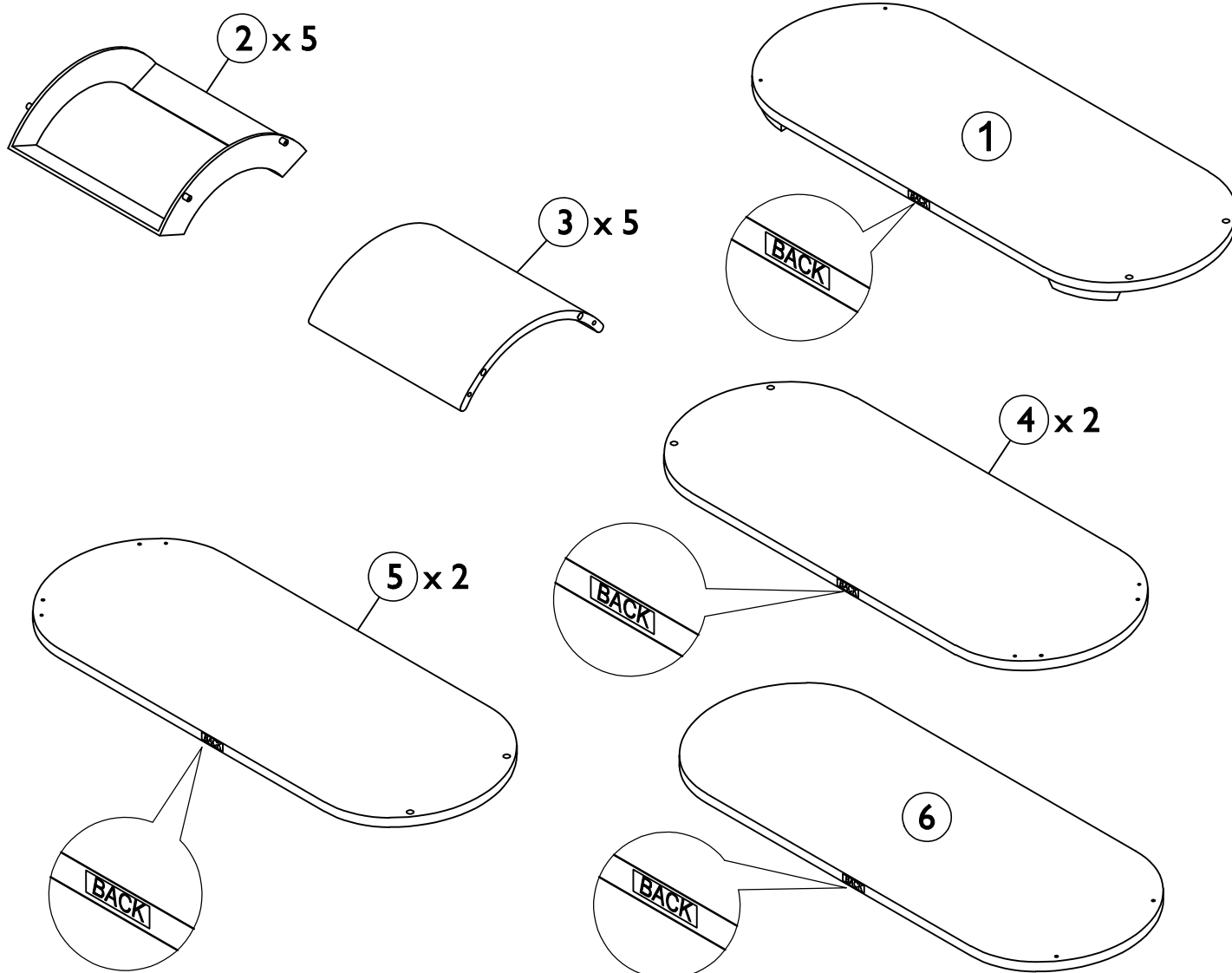
All assembly should be performed on a flat, stable, clean and soft surface.

This product is **HEAVY**, it should be assembled as near as possible to the point of use. **TAKE CARE WHEN LIFTING** to avoid personal injury and (or) damage to the product.

The fitting pack contains **SMALL ITEMS** which should be **KEPT AWAY FROM YOUNG CHILDREN**.

IMPORTANT: Retain these instructions for future reference.

Page : 1



Fittings and parts checklist

Item	Description	Qty.	Item	Description	Qty.
1	Bottom frame	x 1	4	Fixed shelf A	x 2
2	Metal frame	x 5	5	Fixed shelf B	x 2
3	Side panel	x 5	6	Top panel	x 1
A	Felt M40x5mm	x 4	C	Hex head bolt M5x15mm	x 18
B	Metal stud thread	x 20	D	Allen key M4x30x110mm	x 1
b	Plastic sleeve	x 20	E	Cap head bolt M5x15mm	x 2

Step By Step Assembly Instructions

Step 1

- 1.1 : Lay all parts on a flat, stable, clean and soft surface.
- 1.2 : Remove the plastic from 4x felts (A) and stick felts (A) onto under bottom frame (1) as shown.
- 1.3 : Attach 2x metal stud threads (B) onto the pre-drilled holes on bottom frame (1) as shown.
Use a pozi screwdriver to turn fittings (B) clockwise to fix.
- 1.4 : Attach metal frame (2) to part (1) using 2x hex head bolts (C) as shown. Use an allen key (D) to turn fittings (C) clockwise to fix.

Fitting



A x 4



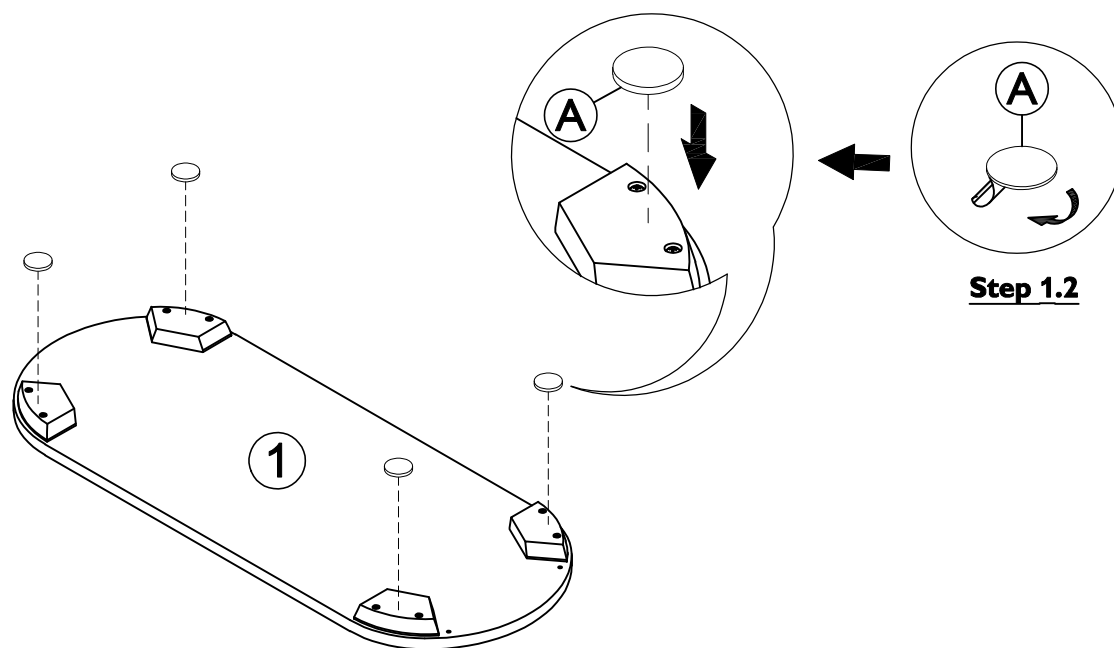
B x 2



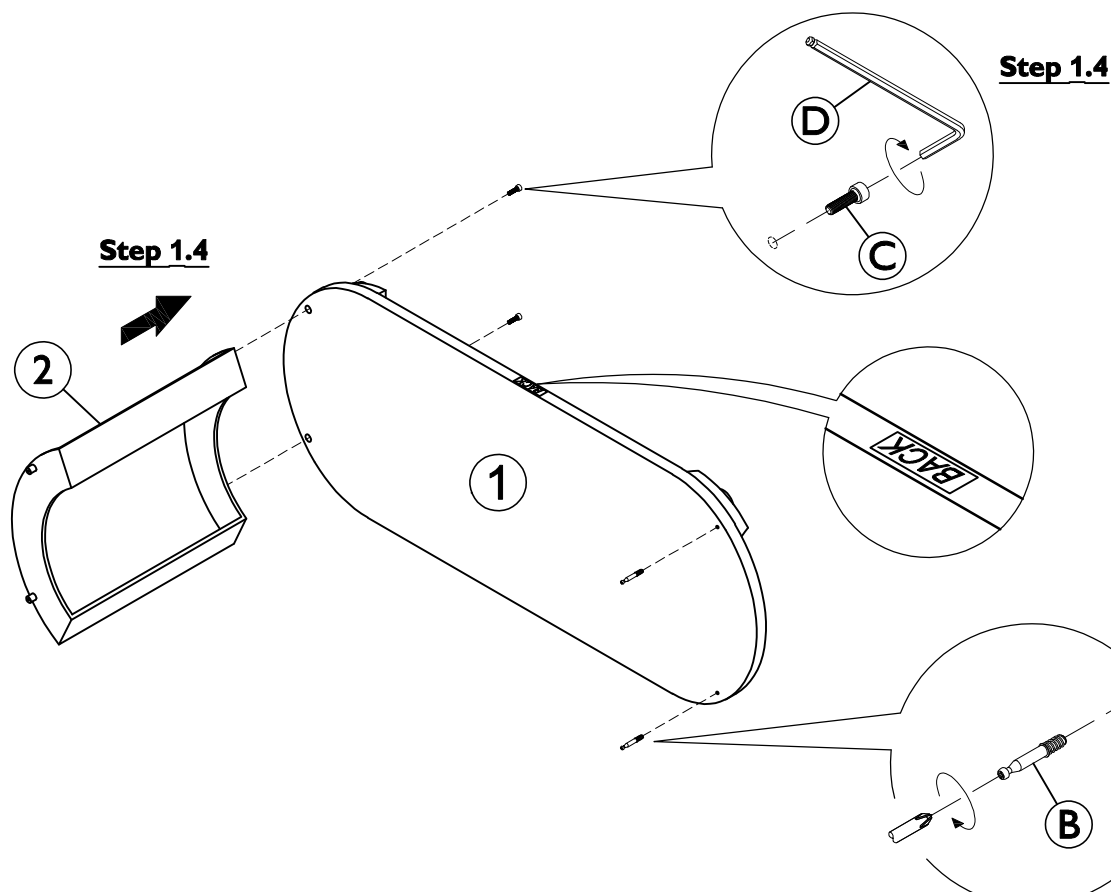
C x 2



D x 1



Step 1.2



Step 1.4

Step 1.4

Step 1.3

Page : 3

Step By Step Assembly Instructions

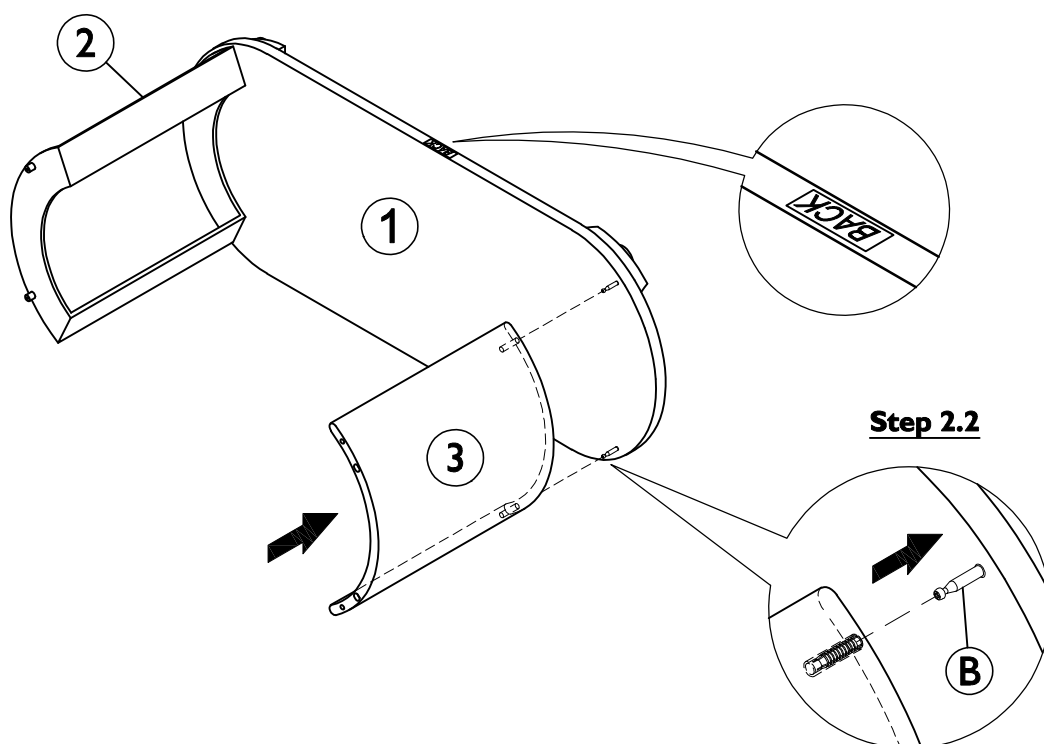
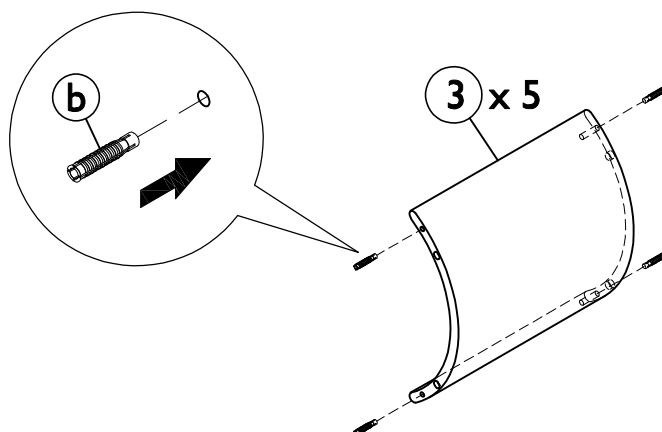
- Step 2**
- 2.1 : Insert 20x plastic sleeves (b) into the pre-drilled holes on side panels (3) as shown.
- 2.2 : Attach side panel (3) onto the structure assembled in **Step 1** as shown. Ensure metal stud threads (B) are aligned correctly with the holes of mating parts before attaching.

Fitting



b x 20

Step 2.1



Step By Step Assembly Instructions

- Step 3**
- 3.1 : Attach 8x metal stud threads (B) onto 2x fixed shelves A (4) by screwing fittings (B) onto the pre-drilled holes on parts (4) as shown. Use a pozi screwdriver to turn fittings (B) clockwise to fix.
- 3.2 : Secure 2x metal frames (2) to 2x parts (4) using 4x hex head bolts (C) as shown. Use an allen key (D) to turn fittings (C) clockwise to fix.

Fitting



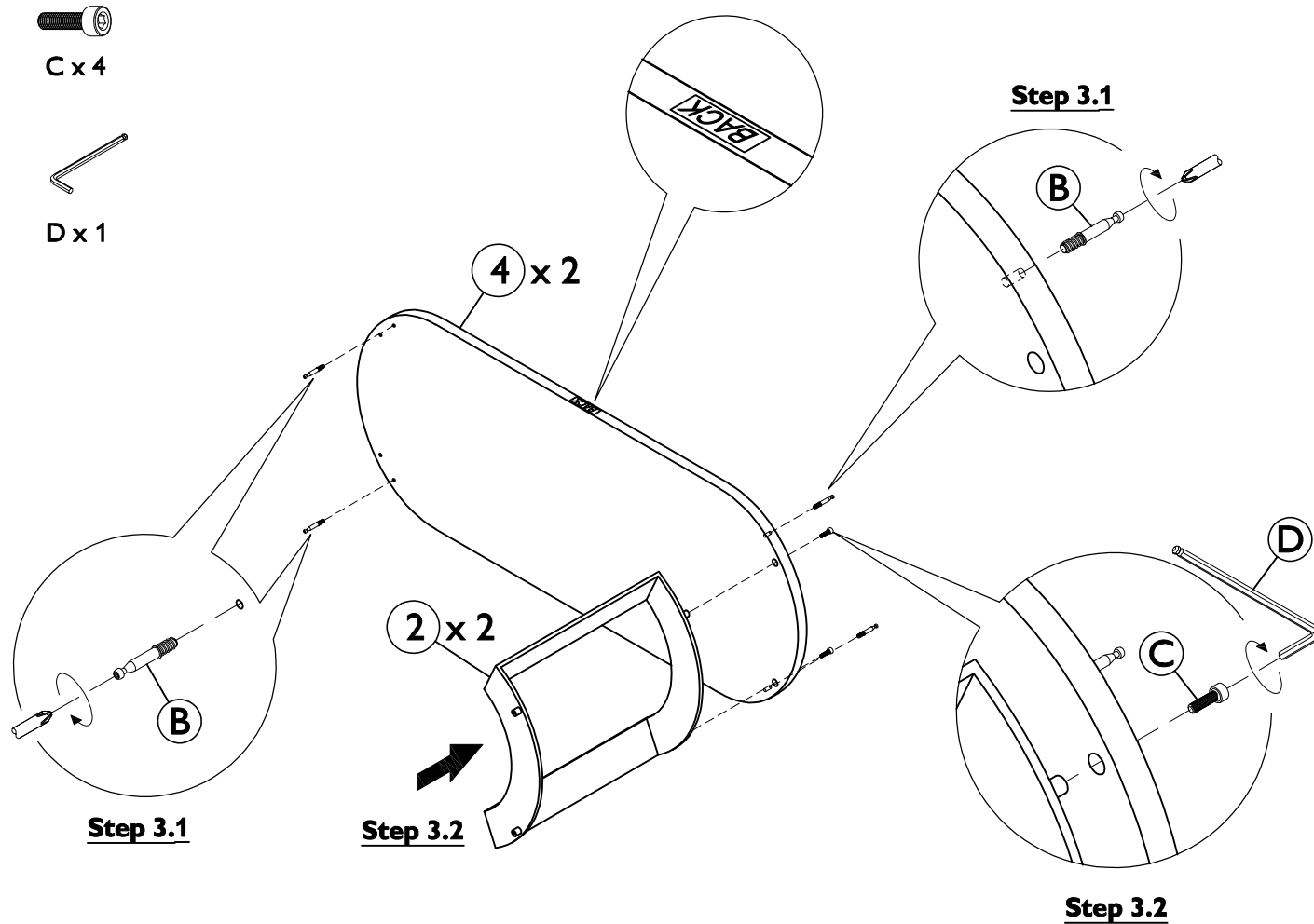
B x 8



C x 4

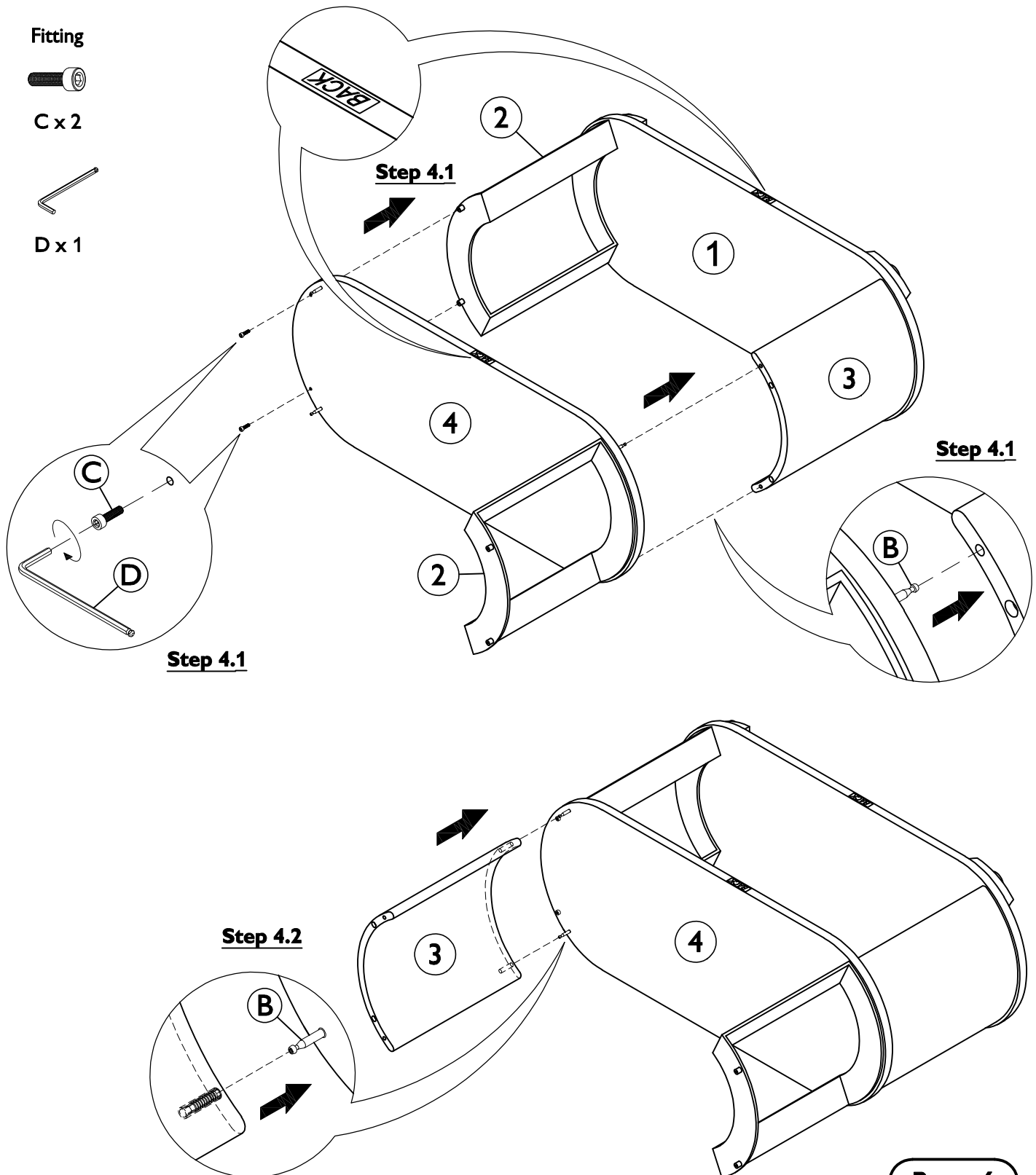


D x 1



Step By Step Assembly Instructions

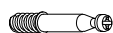
- Step 4**
- 4.1 : Attach structure assembled in **Step 3** onto the structure assembled in **Step 2** using 2x hex head bolts (C) as shown. Ensure metal stud threads (B) are aligned correctly with the holes of mating parts before attaching. Use an allen key (D) to turn fittings (C) clockwise to fix.
- 4.2 : Attach side panel (3) onto the structure assembled in **Step 4.1** as shown. Ensure metal stud threads (B) are aligned correctly with the holes of mating parts before attaching.



Step By Step Assembly Instructions

- Step 5**
- 5.1 : Attach 8x metal stud threads (B) onto 2x fixed shelves B (5) by screwing fittings (B) onto the pre-drilled holes on parts (5) as shown. Use a pozi screwdriver to turn fittings (B) clockwise to fix.
- 5.2 : Secure 2x metal frames (2) to 2x parts (5) using 4x hex head bolts (C) as shown. Use an allen key (D) to turn fittings (C) clockwise to fix.

Fitting



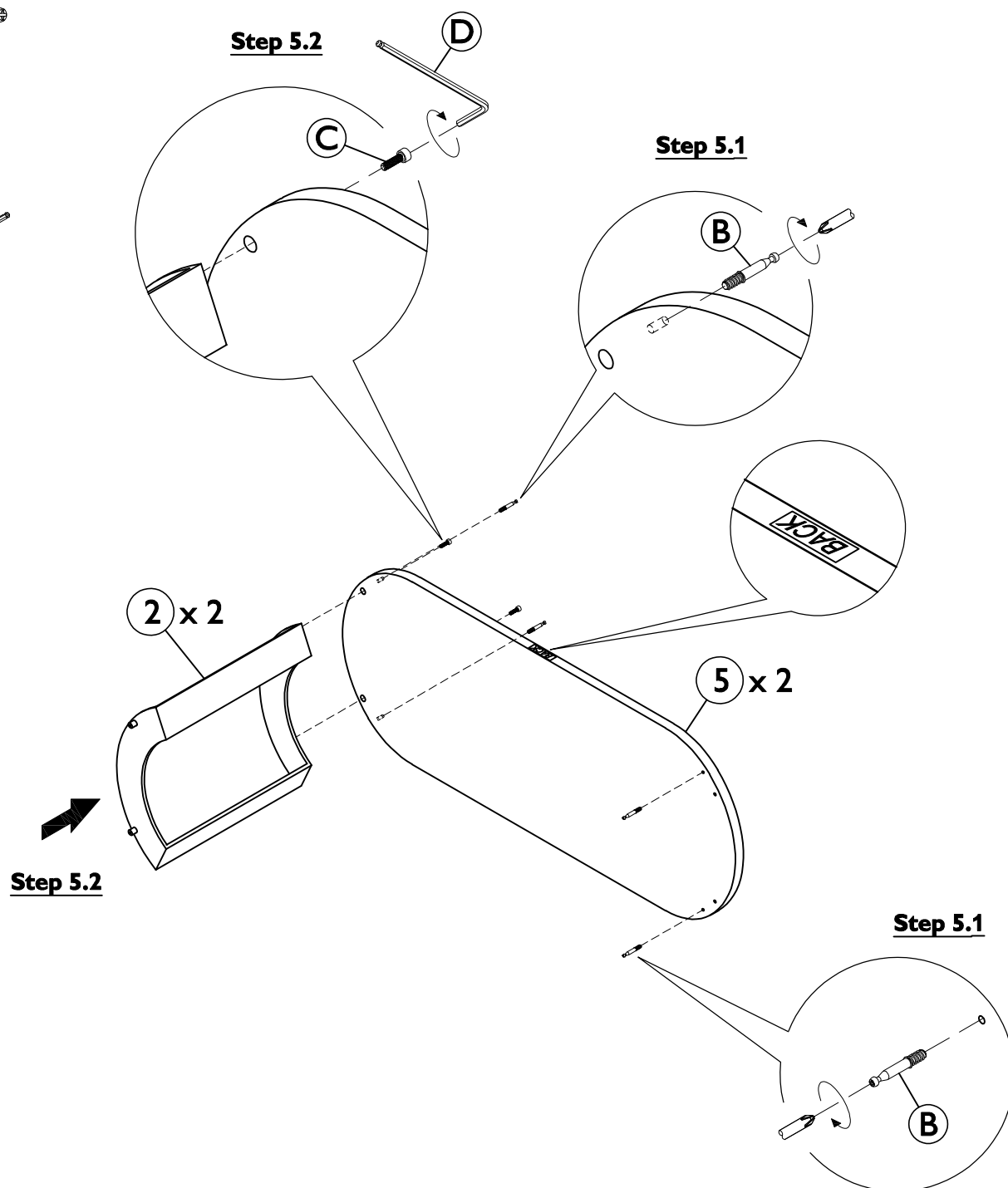
B x 8



C x 4

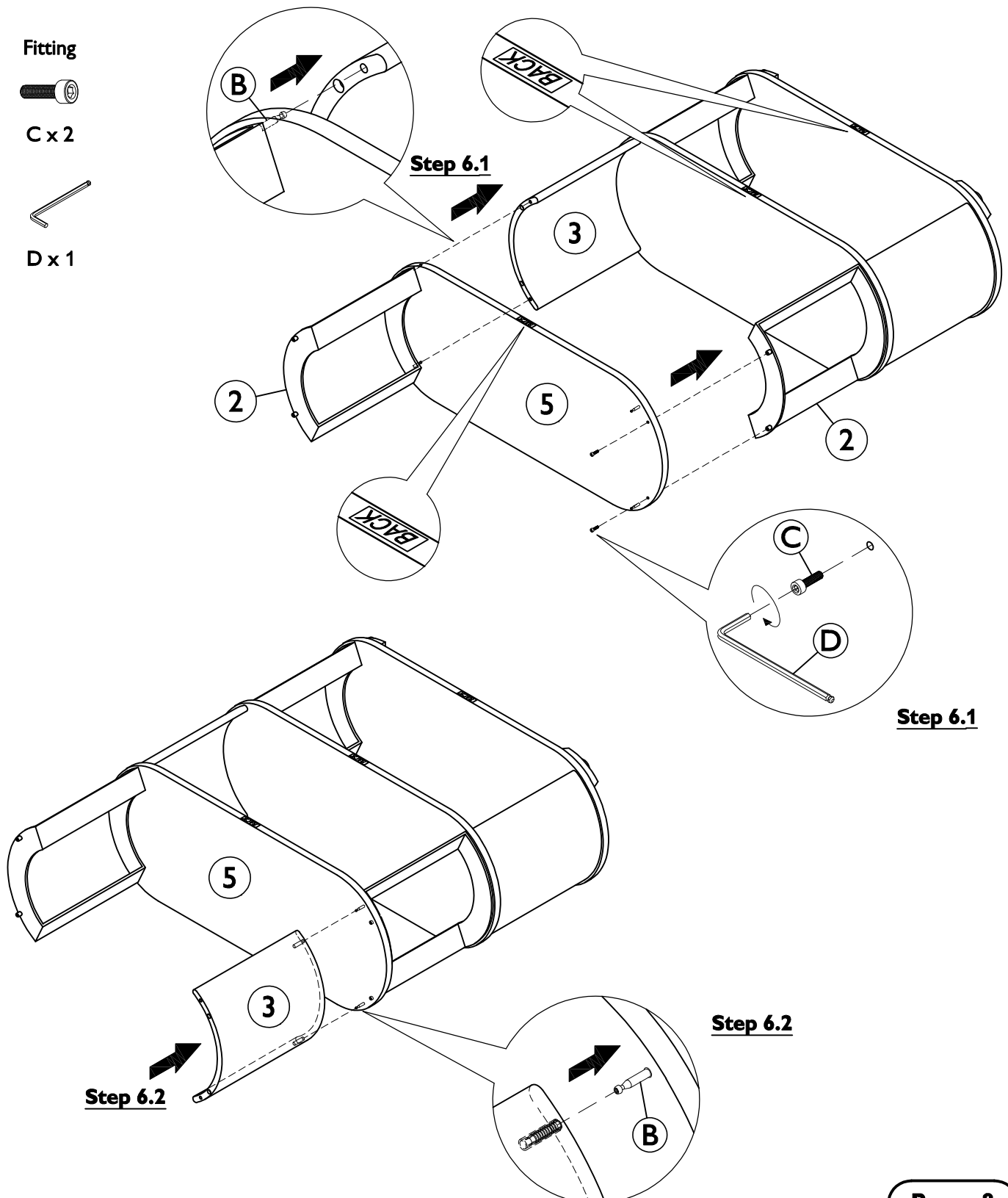


D x 1



Step By Step Assembly Instructions

- Step 6**
- 6.1 : Attach structure assembled in **Step 4** onto the structure assembled in **Step 3** using 2x hex head bolts (C) as shown. Ensure metal stud threads (B) are aligned correctly with the holes of mating parts before attaching. Use an allen key (D) to turn fittings (C) clockwise to fix.
- 6.2 : Attach side panel (3) onto the structure assembled in **Step 6.1** as shown. Ensure metal stud threads (B) are aligned correctly with the holes of mating parts before attaching.



Step By Step Assembly Instructions

Step 7 Repeat above procedures with the remaining the structure assembly.

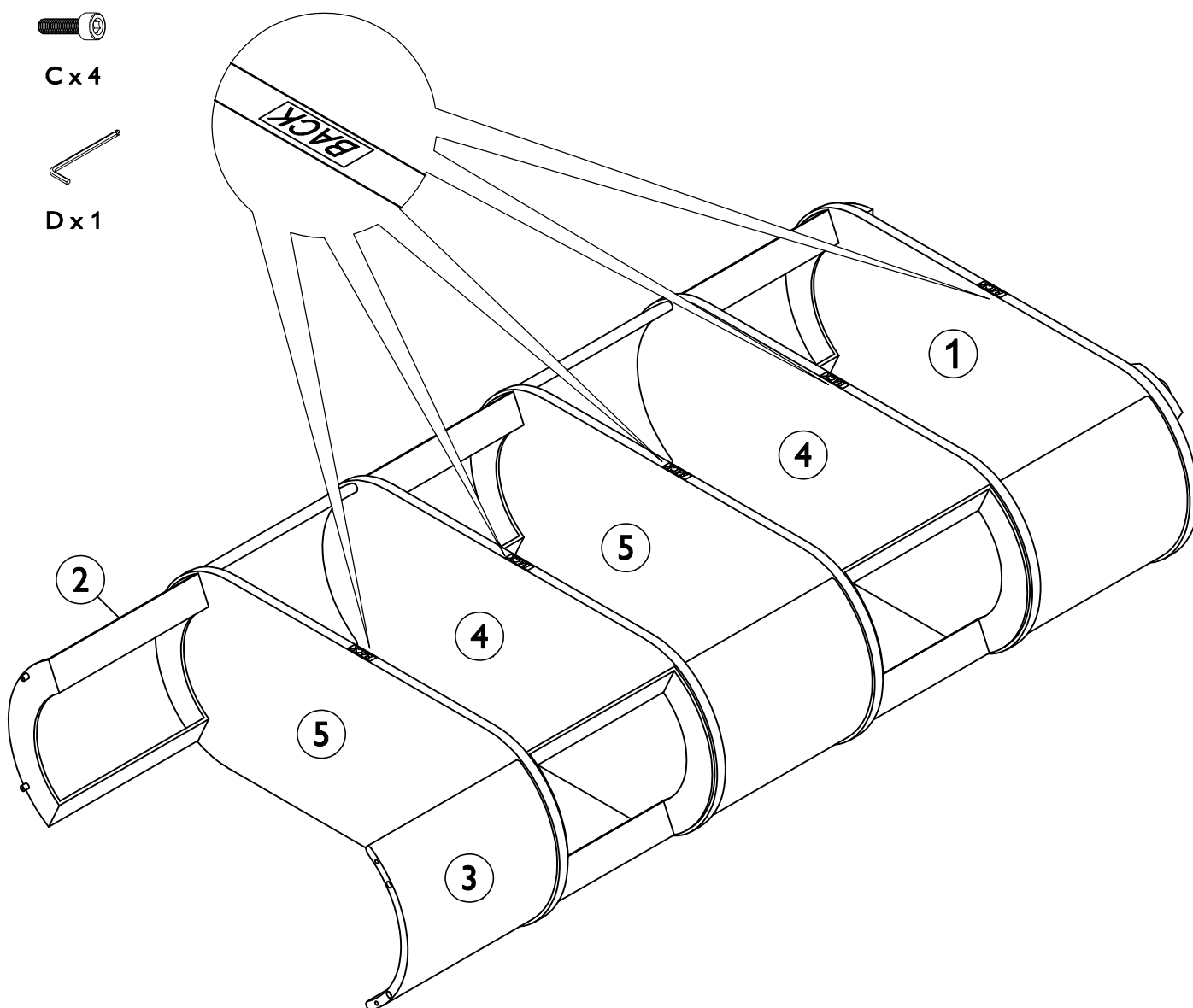
Fitting



C x 4



D x 1



Step By Step Assembly Instructions

Step 8

8.1 : Attach 2x metal stud threads (B) onto top panel (6) by screwing fittings (B) into the inset fittings that is located on part (6) as shown. Use a pozi screwdriver to turn fittings (B) clockwise to fix.

8.2 : Attach top panel (6) onto the structure assembled in **Step 7** using 2x cap head bolts (E) as shown. Ensure metal stud thread (B) is aligned correctly with the holes of mating parts before attaching. Use an allen key (D) to turn fittings (E) clockwise to fix.

Fitting



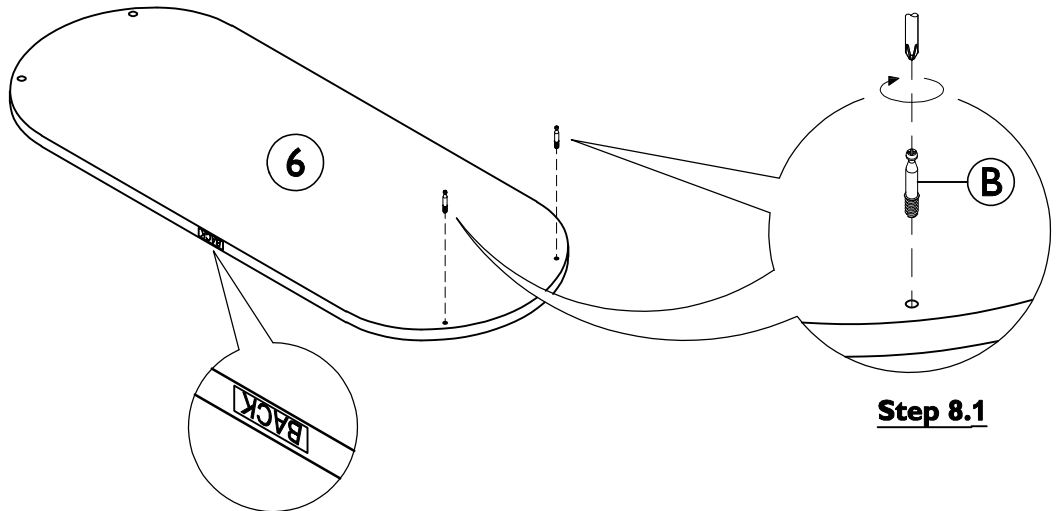
B x 2



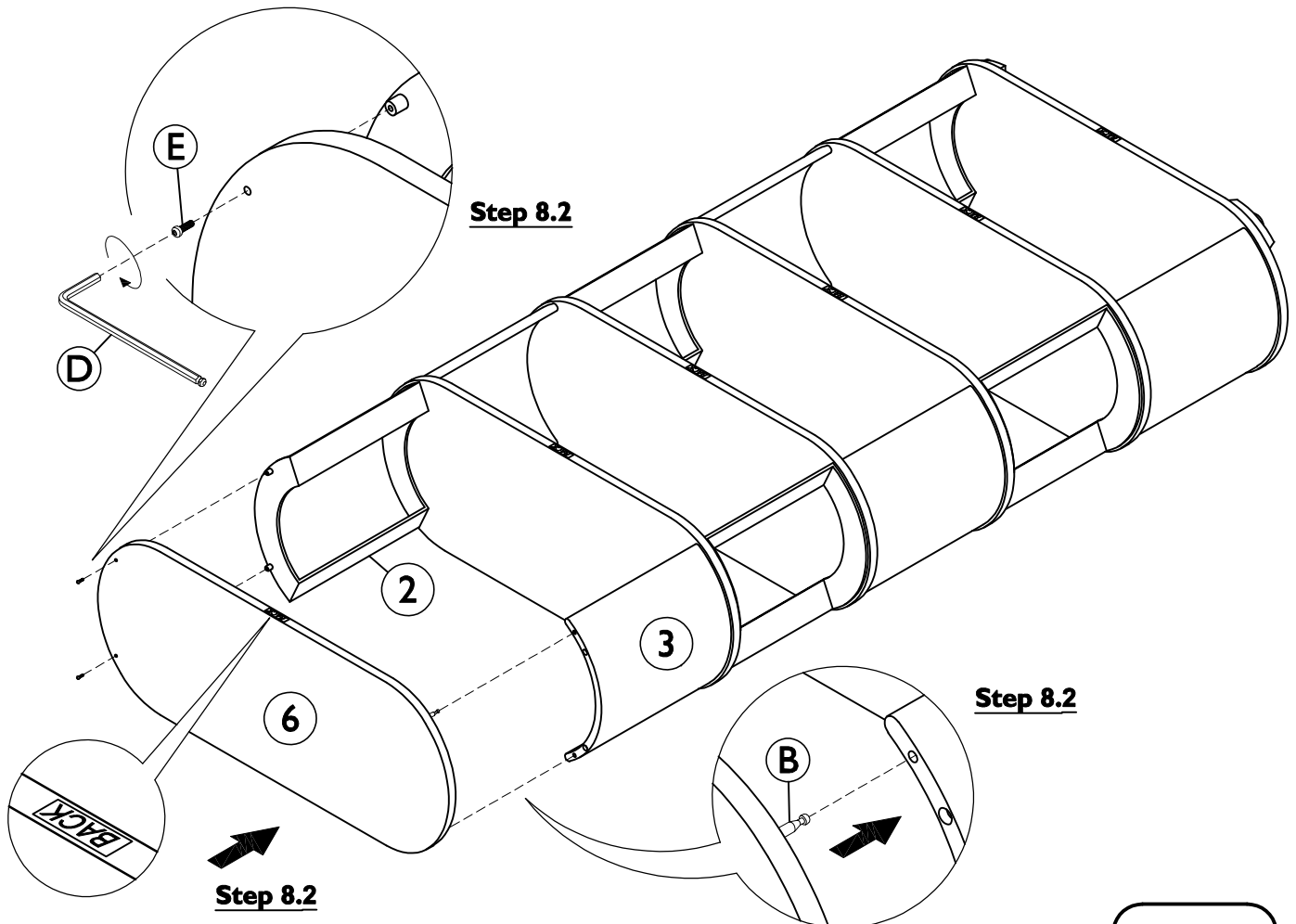
E x 2



D x 1



Step 8.1



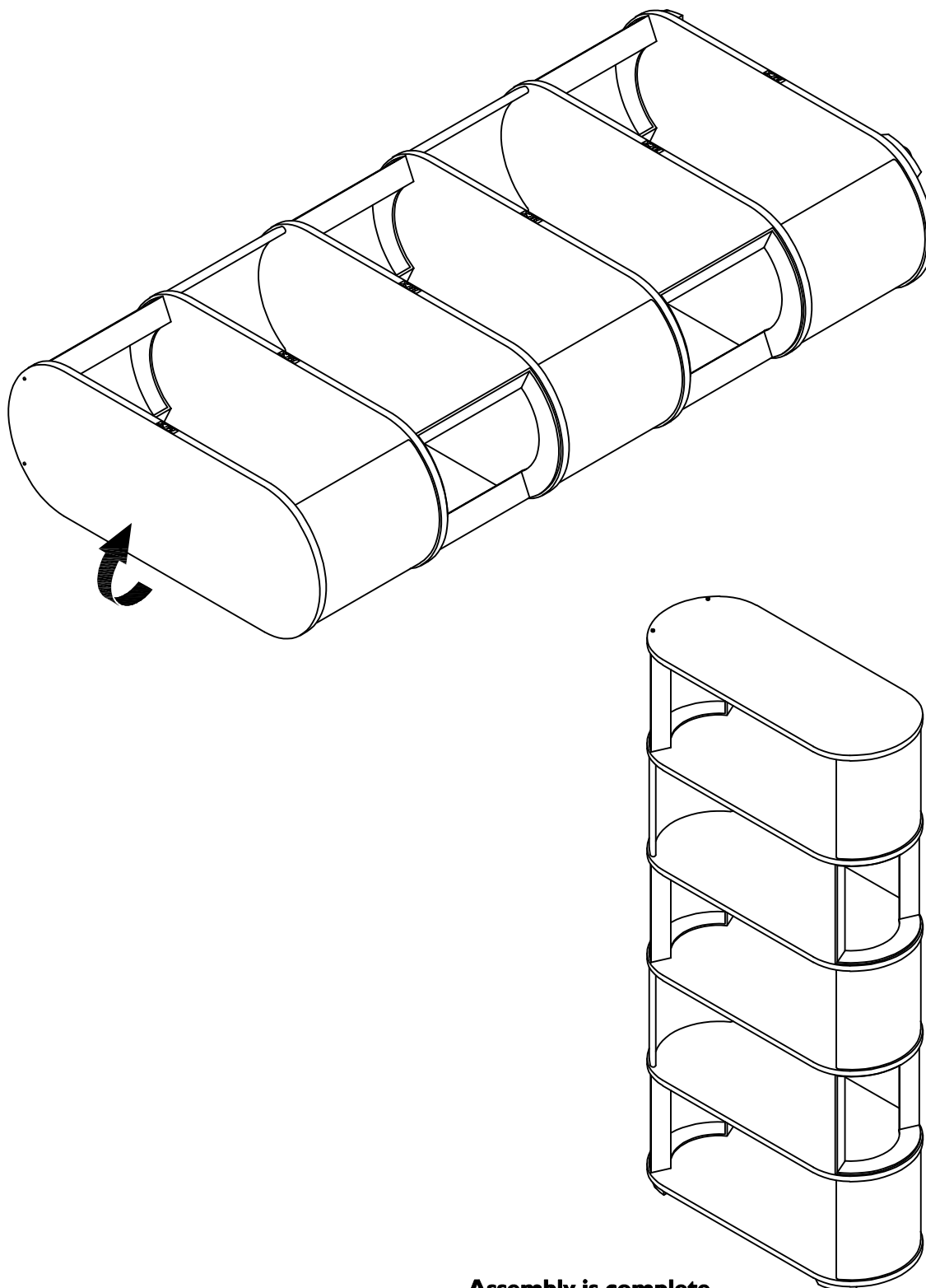
Step 8.2

Step 8.2

Step 8.2

Step By Step Assembly Instructions

Step 9 With help of assistant, stand the unit upright.



Assembly is complete