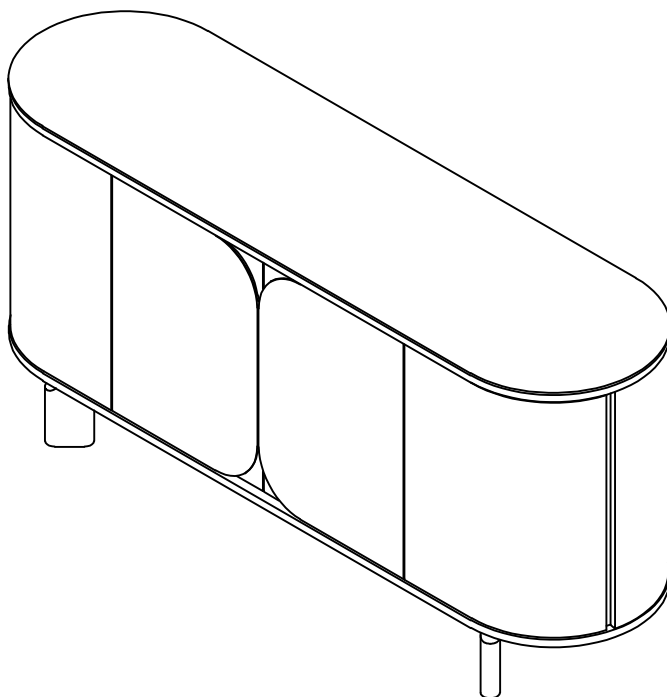


WIDE SIDEBORD

Stock number: 3044-15

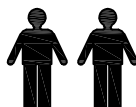
Thank you for purchasing this product. Please read the instructions carefully before use to ensure safe and satisfactory operation of this product.



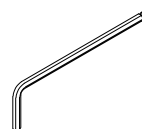
Pre-assembly preparation

Please ensure instructions are read in full before attempting to assemble this product.

Necessary Tools :



(Included)



Please check the pack contents before attempting to assemble this product. A full checklist of components is given in this leaflet. If any components are missing, please contact the retailer from whom you bought this product.

This product takes approximately **20 MINUTES** to assemble with **2 PEOPLE**.

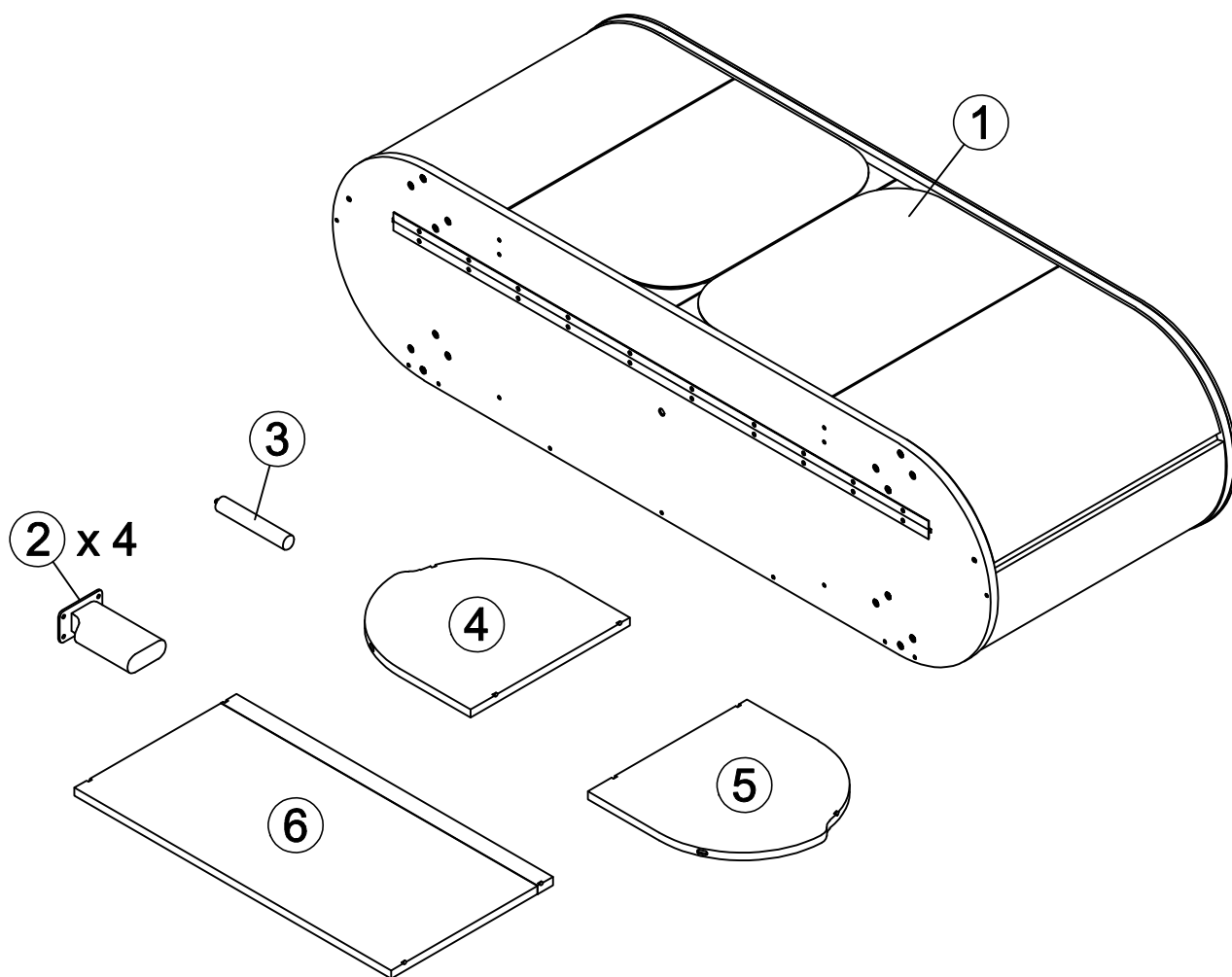
All assembly should be performed on a flat, stable, clean and soft surface.

This product is **HEAVY**, it should be assembled as near as possible to the point of use. **TAKE CARE WHEN LIFTING** to avoid personal injury and (or) damage to the product.





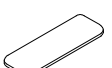
The fitting pack contains **SMALL ITEMS** which should be **KEPT AWAY FROM YOUNG CHILDREN**.

IMPORTANT: Retain these instructions for future reference.

Page : 1



Fittings and parts checklist

Item	Description	Qty.	Item	Description	Qty.
1	Top unit	x 1	4	Adjustable Shelf A Left	x 1
2	Leg	x 4	5	Adjustable Shelf A Right	x 1
3	Center Leg	x 1	6	Adjustable Shelf Frame B	x 1
A	Hex Head Bolt M8x15mm	 x 16	D	Felt Ø20x6mm	 x 1
B	Allen Key M4x30x110mm	 x 1	E	Shelf Pin	 x 12
C	Felt 6x20x72mm	 x 4			

Step By Step Assembly Instructions

- Step 1**
- 1.1 : Lay all parts on a flat, stable, clean and soft surface.
 - 1.2 : Attach 4x legs (2) onto top unit (1) by 16x hex head bolts (A) as shown. Ensure the pre-drilled holes on legs (2) are aligned correctly with the holes on part (1) before attaching. Use an allen key (B) to turn fittings (A) clockwise to fix.
 - 1.3 : Screw center leg (3) into metal mounting plate as shown.

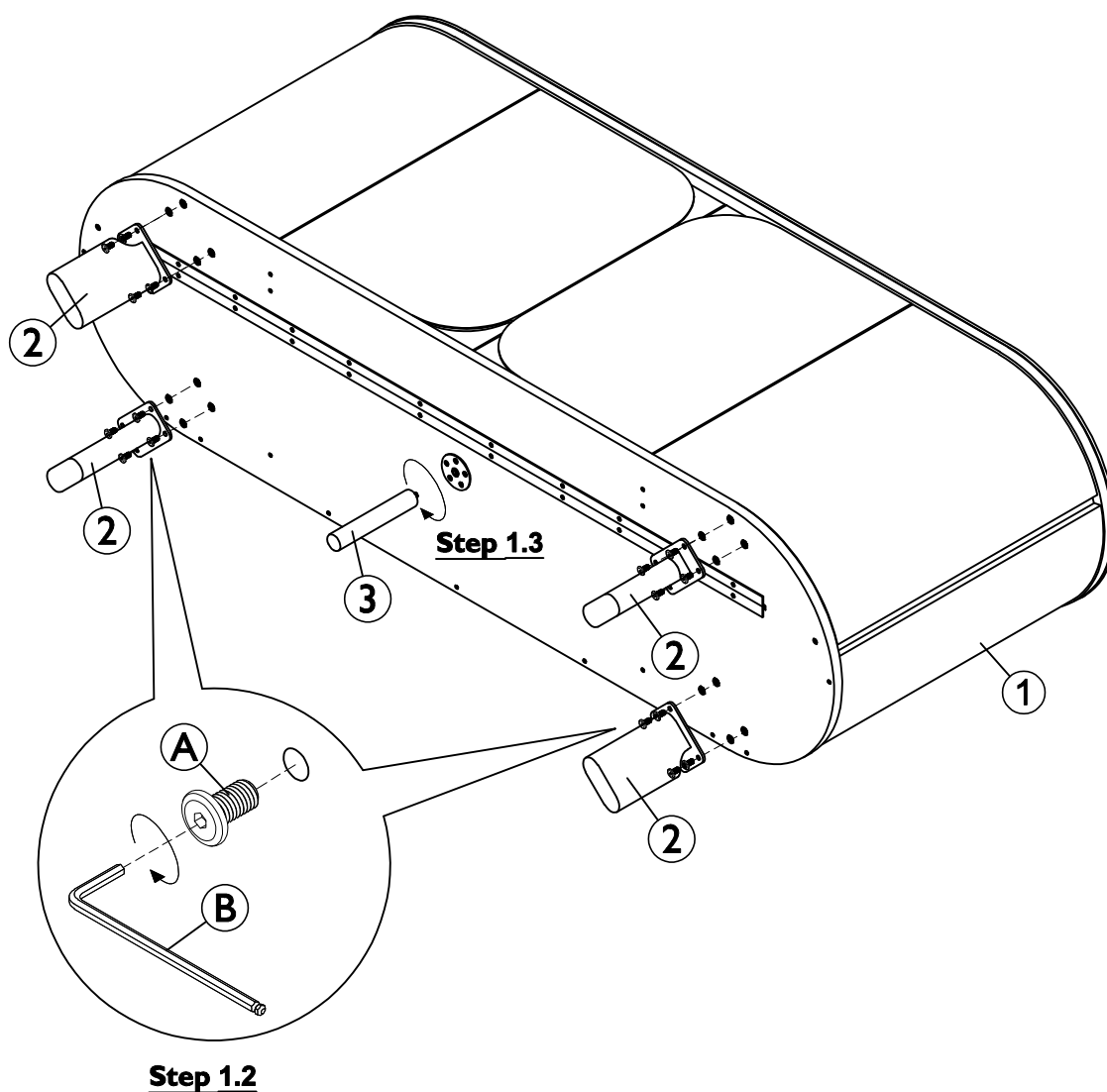
Fitting



A x 16



B x 1



Step By Step Assembly Instructions

- Step 2**
- 2.1 : Remove the plastic from 4x felts (C) and stick felts (C) onto under legs (2) as shown.
 - 2.2 : Remove the plastic from 1x felt (D) and stick felt (D) onto under center leg (3) as shown.
 - 2.3 : Stand the unit upright.

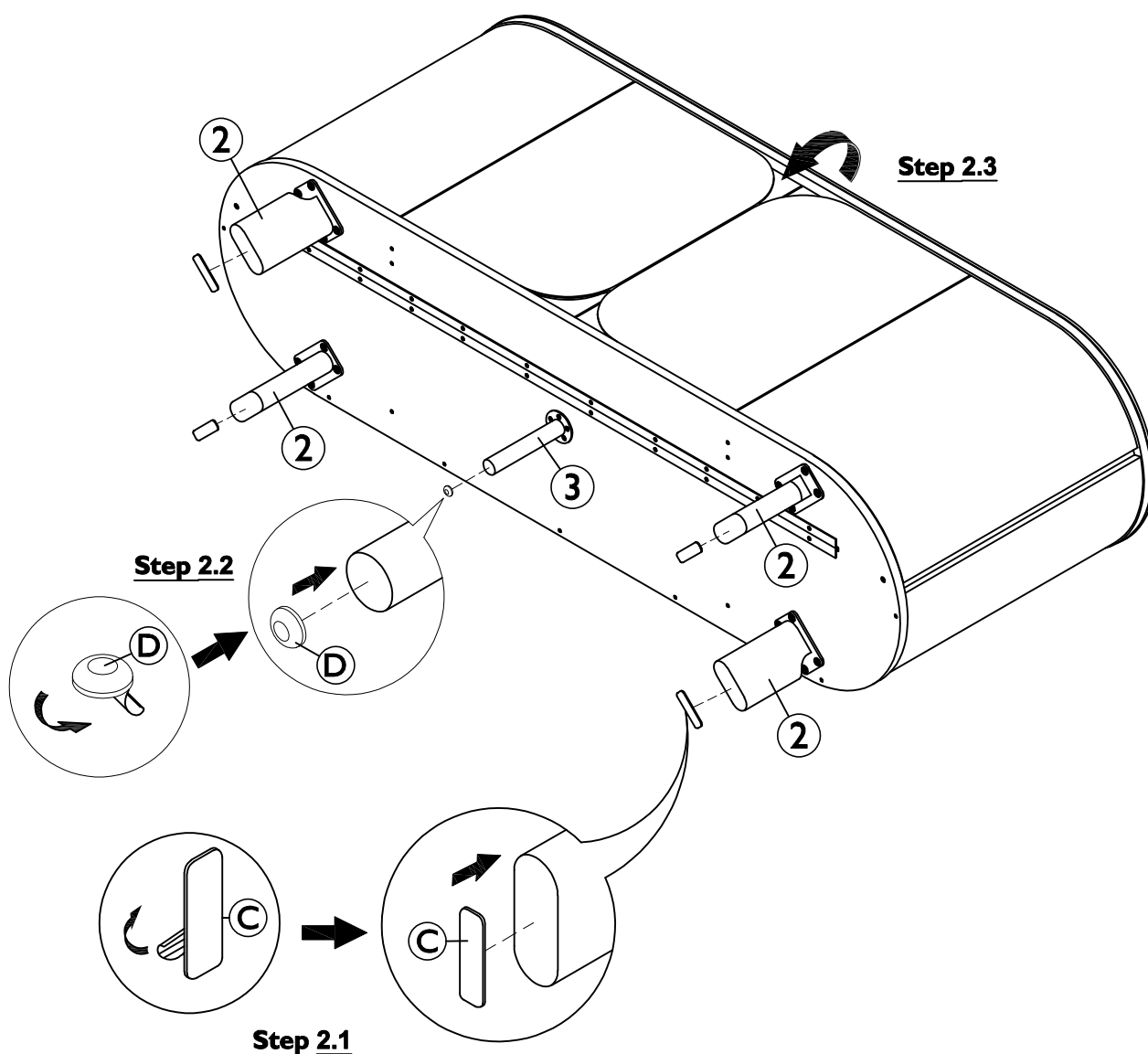
Fitting



C x 4



D x 1



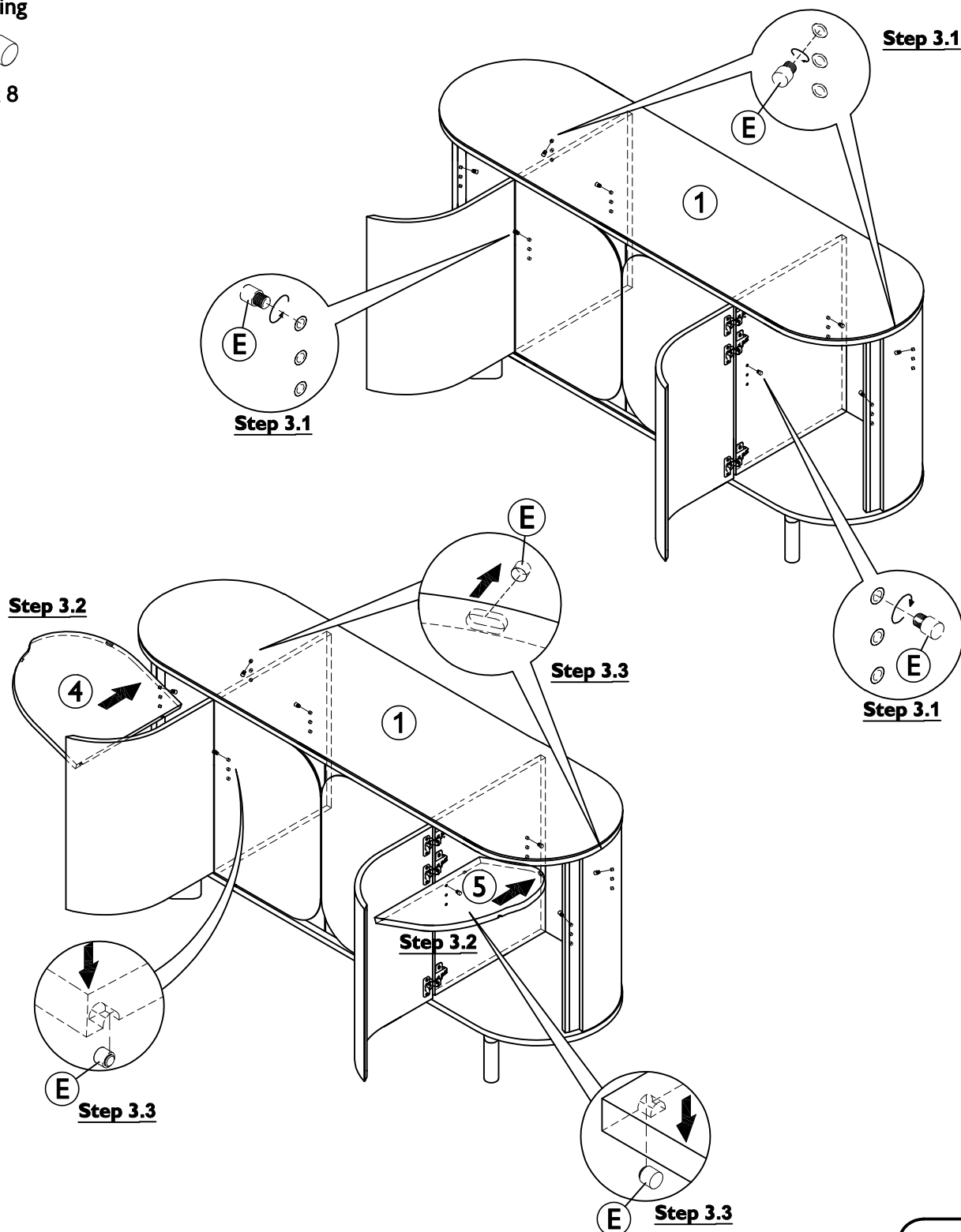
Step By Step Assembly Instructions

- Step 3**
- 3.1 : Screw 8x shelf pins (E) into the inset fittings in left & right side panels, left & right partitions of the unit (1) as shown.
 - 3.2 : Tilt adjustable shelves (4) & (5) to a suitable angle as shown in the picture so as to slide them in.
 - 3.3 : Slide adjustable shelves (4) & (5) into the top unit (1). Ensure the notches on adjustable shelves (4) & (5) are facing down, then lower the left & right side of adjustable shelves (4) & (5) onto the pin side of shelf pins (E) as shown.

Fitting



E x 8



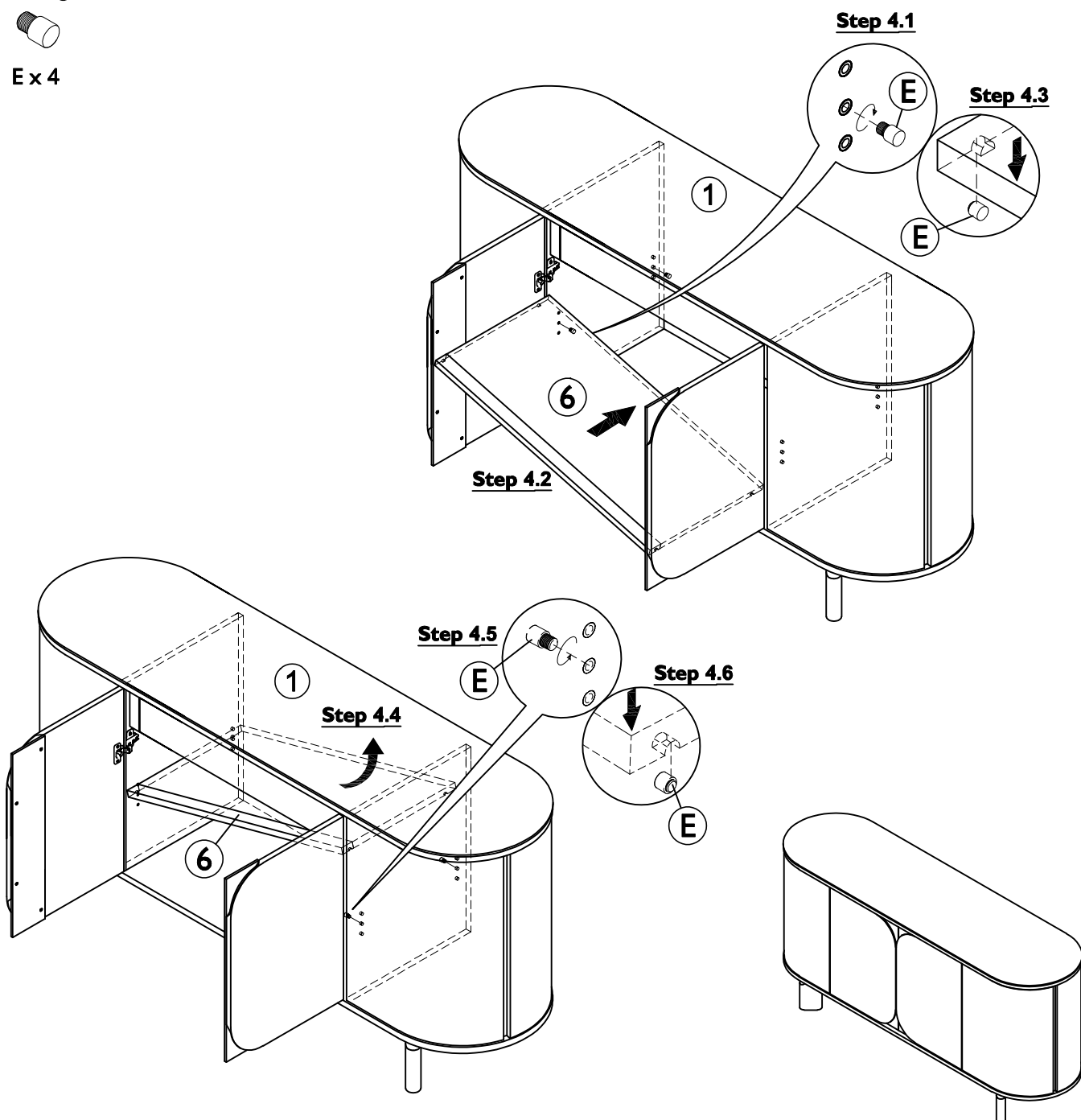
Step By Step Assembly Instructions

- Step 4**
- 4.1 : Screw 2x shelf pins (E) into the inset fittings on partition frame left the unit (1) as shown.
 - 4.2 : Tilt adjustable shelf frame B (6) to a suitable angle as shown in the picture so as to slide them in.
 - 4.3 : Slide part (6) into the unit. Ensure the notches on adjustable shelf frame B (6) are facing down, then lower the right side of adjustable shelf frame B (6) onto the pins of shelf pins (E) as shown.
 - 4.4 : Lift up left side of adjustable shelf frame B (6).
 - 4.5 : Screw 2x shelf pins (E) into the inset fittings on partition frame right the unit (1) as shown.
 - 4.6 : Lower adjustable shelf frame B (6) onto the pins of shelf pins (E) as shown.

Fitting



E x 4

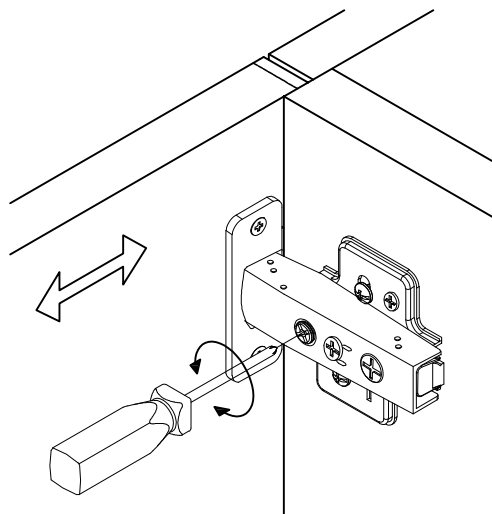


Assembly is complete

Hinge adjustment instructions

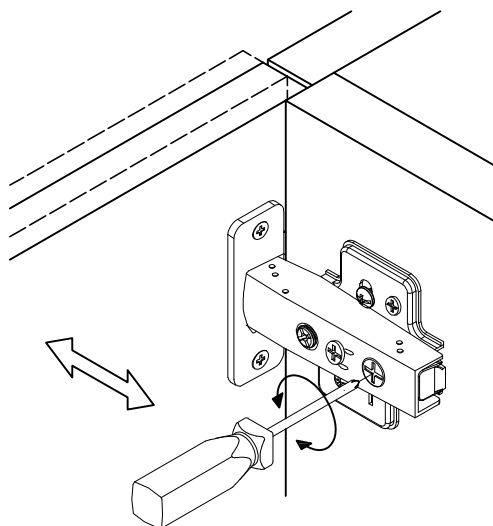
LATERAL ADJUSTMENT

by screw adjustment.



FRONT-TO-BACK

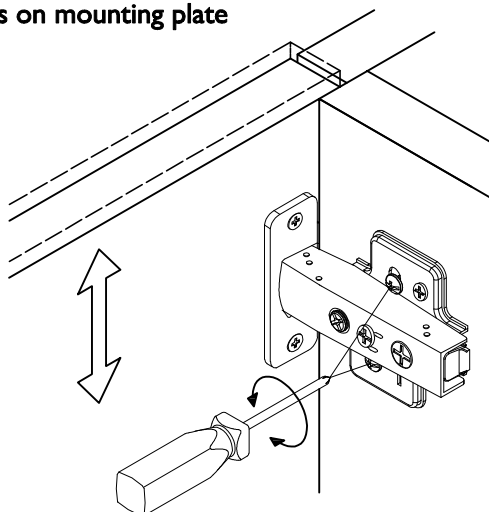
by slackening and retightening the hinge-arm mounting screw.



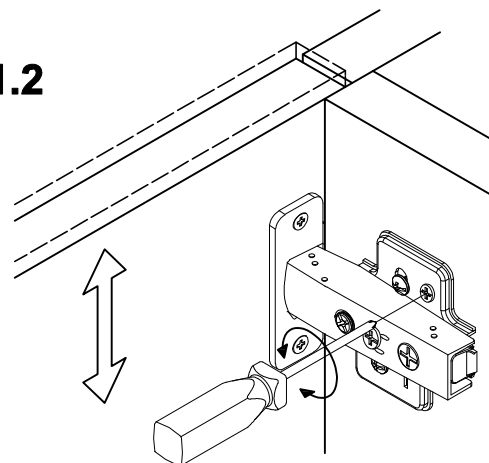
VERTICAL ADJUSTMENT

via slots on mounting plate by slackening and retightening the screws on mounting plate

1.1



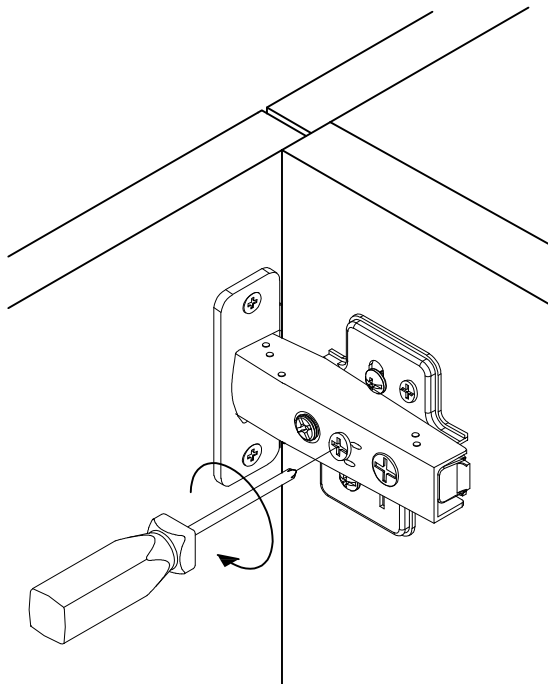
1.2



Hinge adjustment instructions

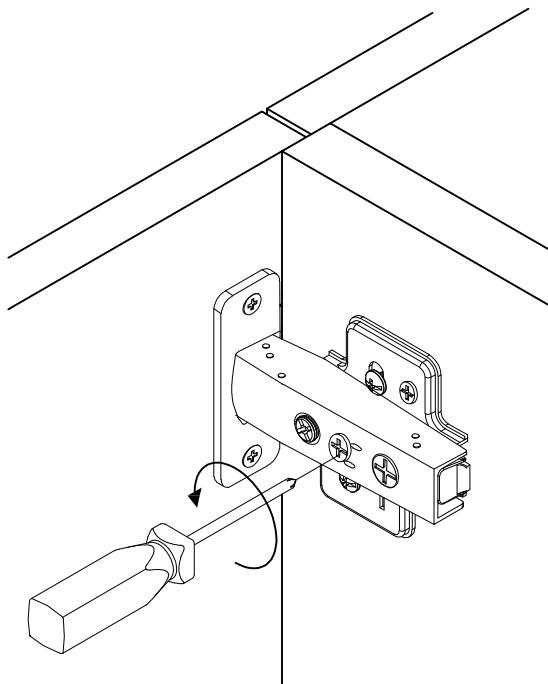
SLOW DOWN CLOSING

by screw adjustment to clockwise.



SPEED UP CLOSING

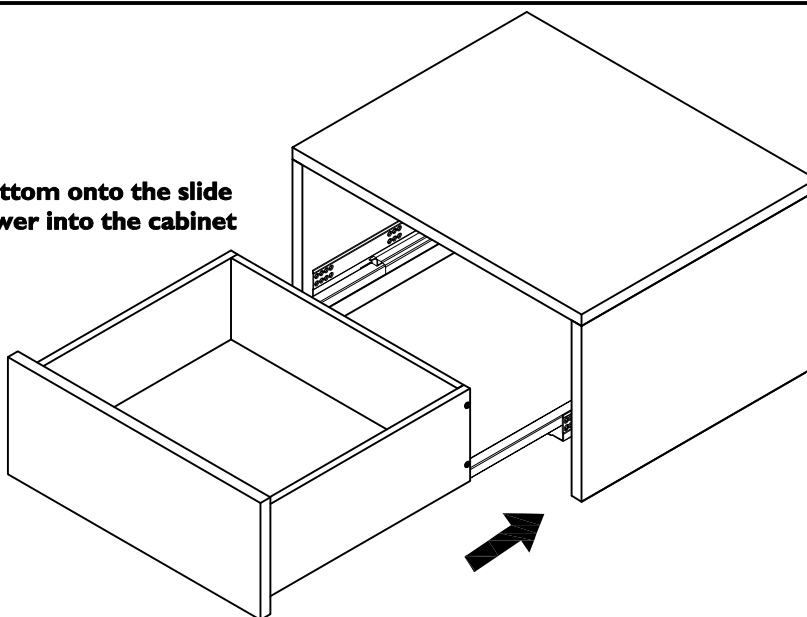
by screw adjustment to counter clockwise.



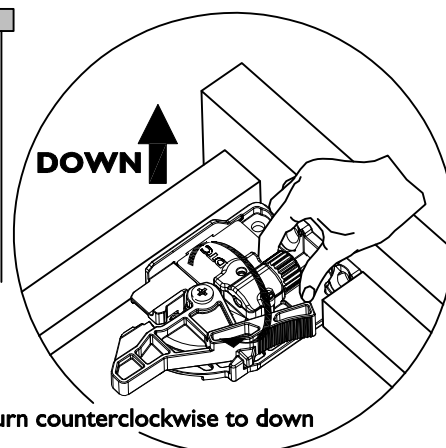
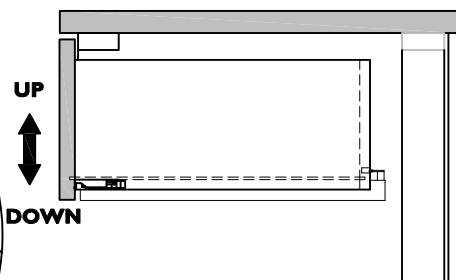
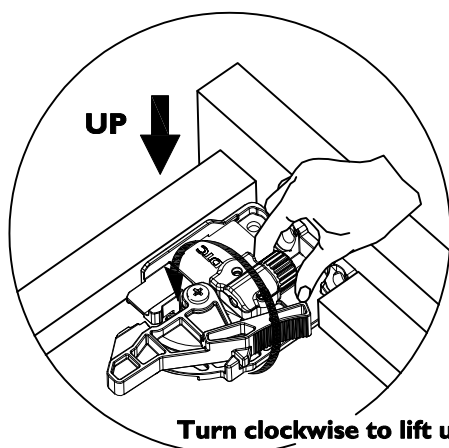
UNDERMOUNT DRAWER GLIDE ADJUSTMENT INSTRUCTION

ASSEMBLE

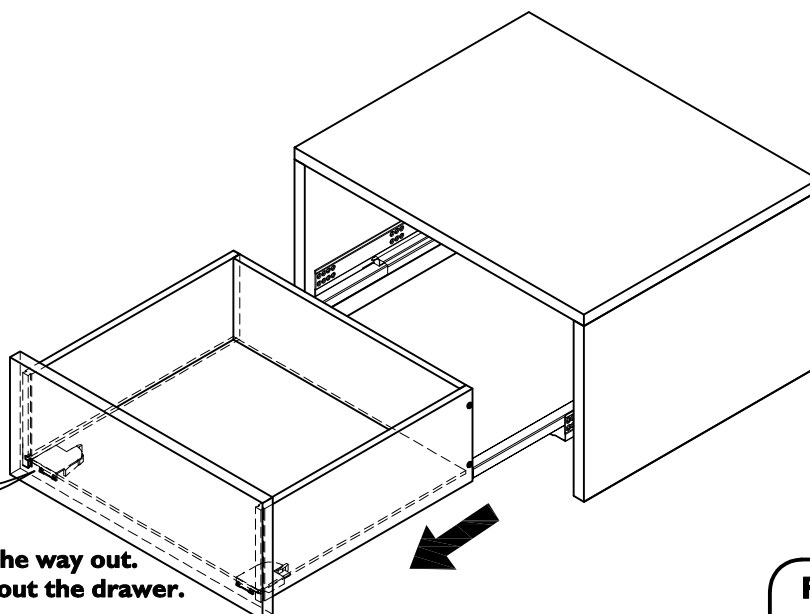
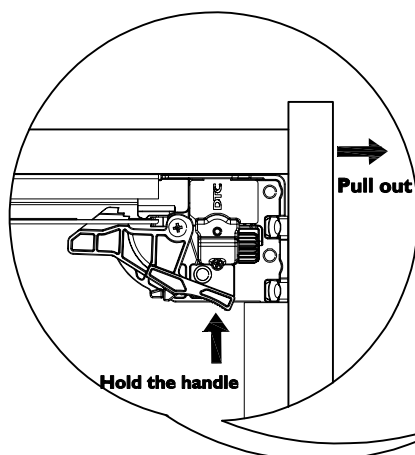
Lay the drawer bottom onto the slide
then push the drawer into the cabinet



HEIGHT ADJUSTMENT



REMOVE



For removal, extend the runner all the way out.
Unlock by hold the handle and pull out the drawer.